

# ***NO POSTHUMUS MOMENTUM IN MI; GRANHOLM UP 13 PTS, 8 DAYS OUT***

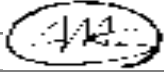
\* EXCLUSIVE SURVEYUSA RESEARCH RESULTS \*

YOU MUST CREDIT SURVEYUSA IF YOU AIR, CITE  
OR REPRINT THESE RESULTS IN WHOLE OR PART

## ***DEMOCRAT IN COMMAND IN RACE FOR MICHIGAN STATEHOUSE***

- \* IN A GENERAL ELECTION HELD TODAY, DEMOCRAT JENNIFER GRANHOLM WINS THE MICHIGAN GOVERNOR CONTEST BY 55% TO 42% OVER GOP DICK POSTHUMUS, ACCORDING TO THIS LATEST EXCLUSIVE SURVEYUSA POLL OF 663 LIKELY VOTERS, CONDUCTED 10/25 + 10/26 + 10/27.
  
- \* GRANHOLM ALSO LED BY 13 PTS LAST WEEK AND BY 14 PTS 3 WKS AGO. ELECTION IS ON 11/5.
- \* GRANHOLM TOPS WOMEN BY 30 POINTS. POSTHUMUS LEADS BY 5 PTS WITH MALE VOTERS.
- \* PRO-LIFE VOTERS PICK POSTHUMUS BY 23 PTS. PRO-CHOICERS CHOOSE GRANHOLM BY 35 PTS.
- \* GRANHOLM SWEEPS DEMS 13:1. POSTHUMUS TOPS GOP 6:1. INDEPENDENTS GO FOR GRANHOLM 3:2.
- \* GRANHOLM WINS BIG IN DETROIT. GRAND RAPIDS AREA IS EVEN. GRANHOLM LEADS OTHER AREAS.
  
- \* SURVEY OF 800 MICHIGAN ADULTS, INCLUDING 733 REGISTERED AND 663 LIKELY VOTERS.

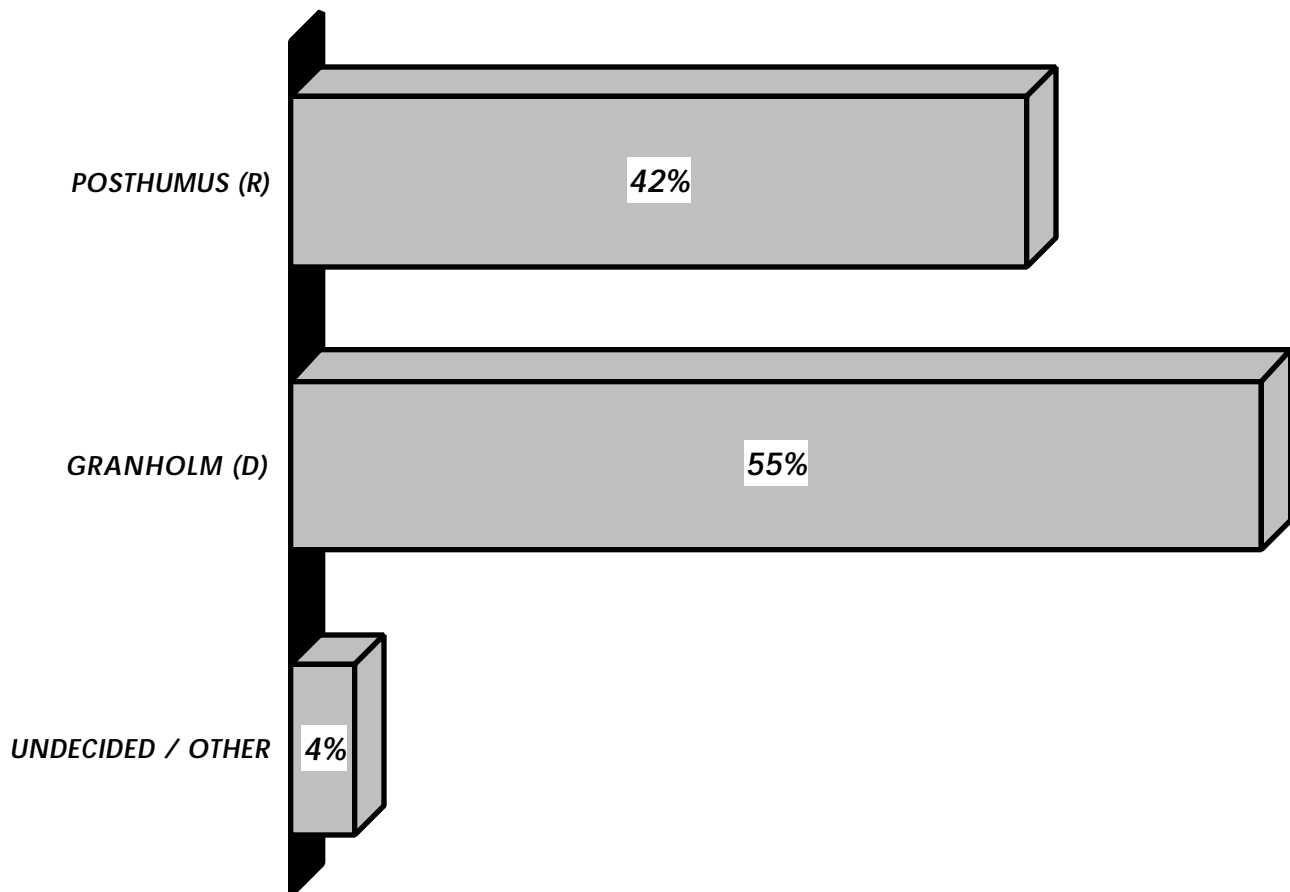
<b>RESEARCH CONDUCTED E.T.</b>	021025 16: 25-20: 52 021025 16: 26-20: 51 021026 11: 00-	<b>APPROVED</b>
<b>RESPONDENTS DRAWN FROM</b>	THE ENTIRE STATE OF MICHIGAN	
<b>RANDOM SAMPLE SELECTED BY</b>	SURVEY SAMPLING, INC.	



**FOR COMMENT, ADDITIONAL ANALYSIS OR ACTUALITY, CALL 1-800-786-8000**

**Q1: VOTE FOR GOVERNOR / ALL LIKELY VOTERS**

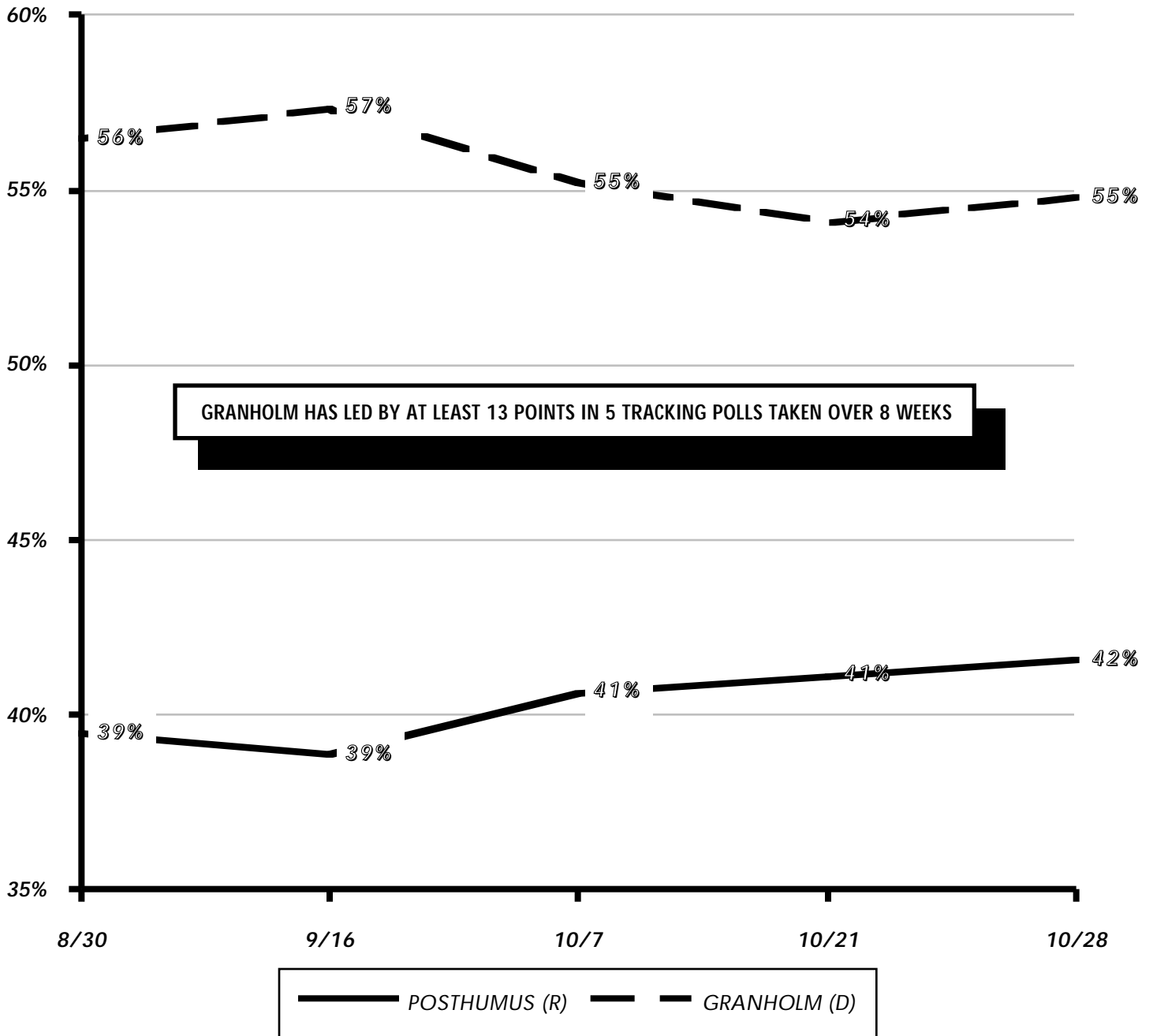
VOTERS IN MICHIGAN WILL ELECT A GOVERNOR ON NOVEMBER 5TH. IF THE ELECTION FOR GOVERNOR WERE TODAY, AND YOU WERE STANDING IN THE VOTING BOOTH RIGHT NOW, WHO WOULD YOU VOTE FOR? REPUBLICAN DICK POSTHUMUS? OR DEMOCRAT JENNIFER GRANHOLM?



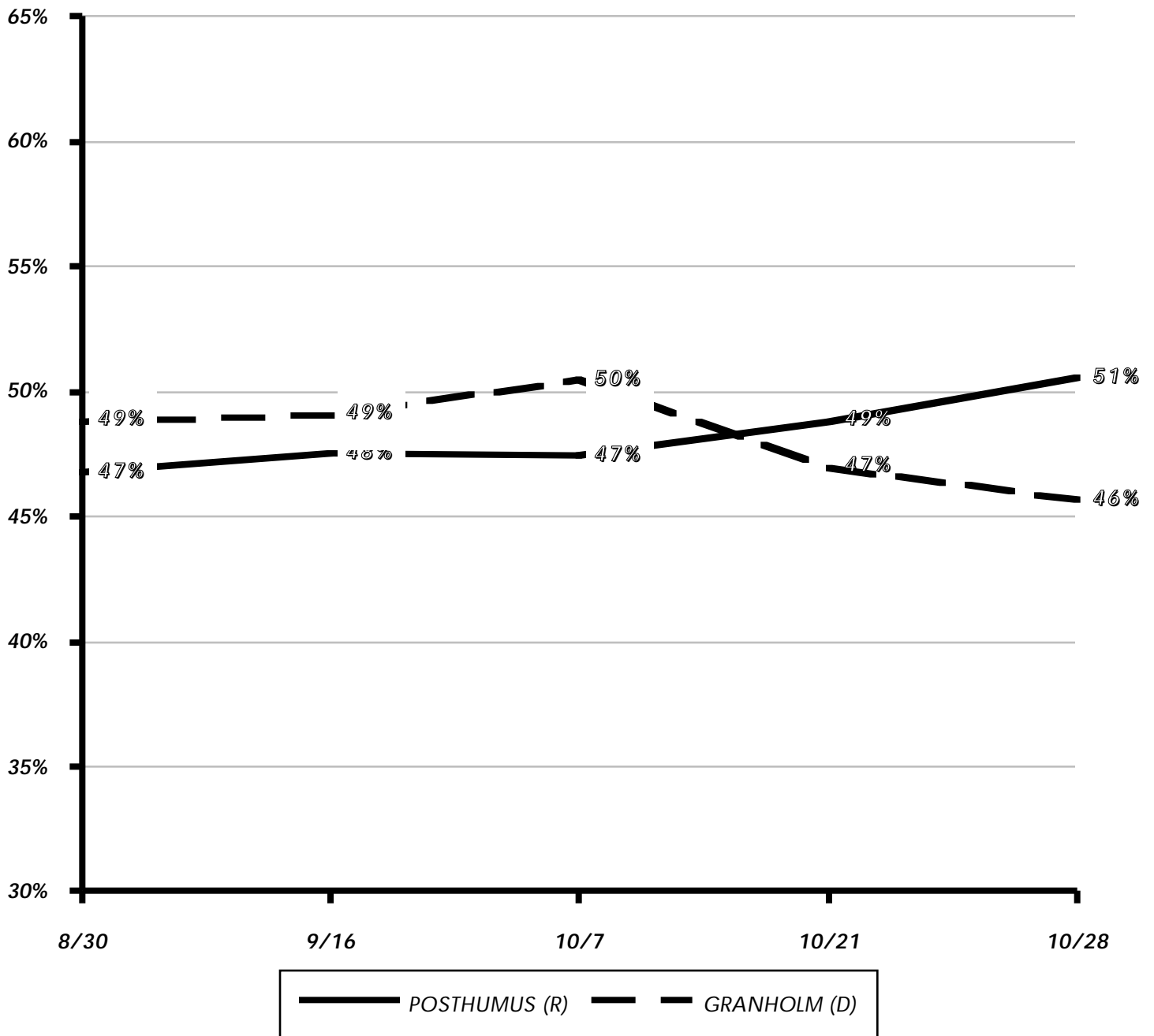
THIS IS A SURVEY OF	663	LIKELY VOTERS FROM THE ENTIRE STATE OF MICHIGAN
OVERALL RESULTS CONSIDERED SIGNIFICANT	$\pm 3.9\%$	A LARGER $\pm$ APPLIES TO SUBPOPULATIONS

RESULTS MAY NOT ADD TO 100%, BECAUSE PERCENTAGES ARE ROUNDED TO WHOLE NUMBERS

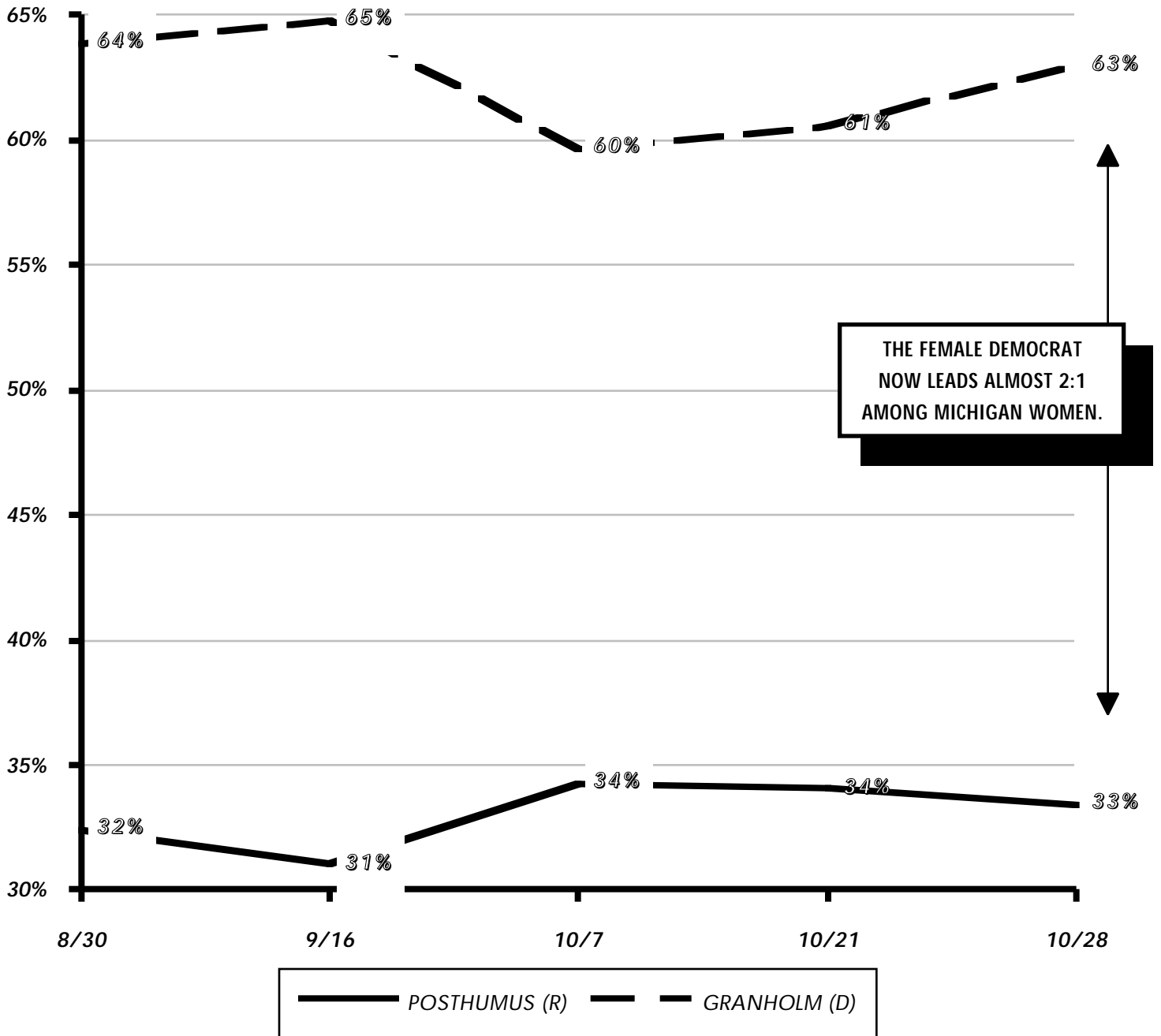
Q1: VOTE FOR GOVERNOR / ALL LIKELY VOTERS, TRACKED OVER TIME



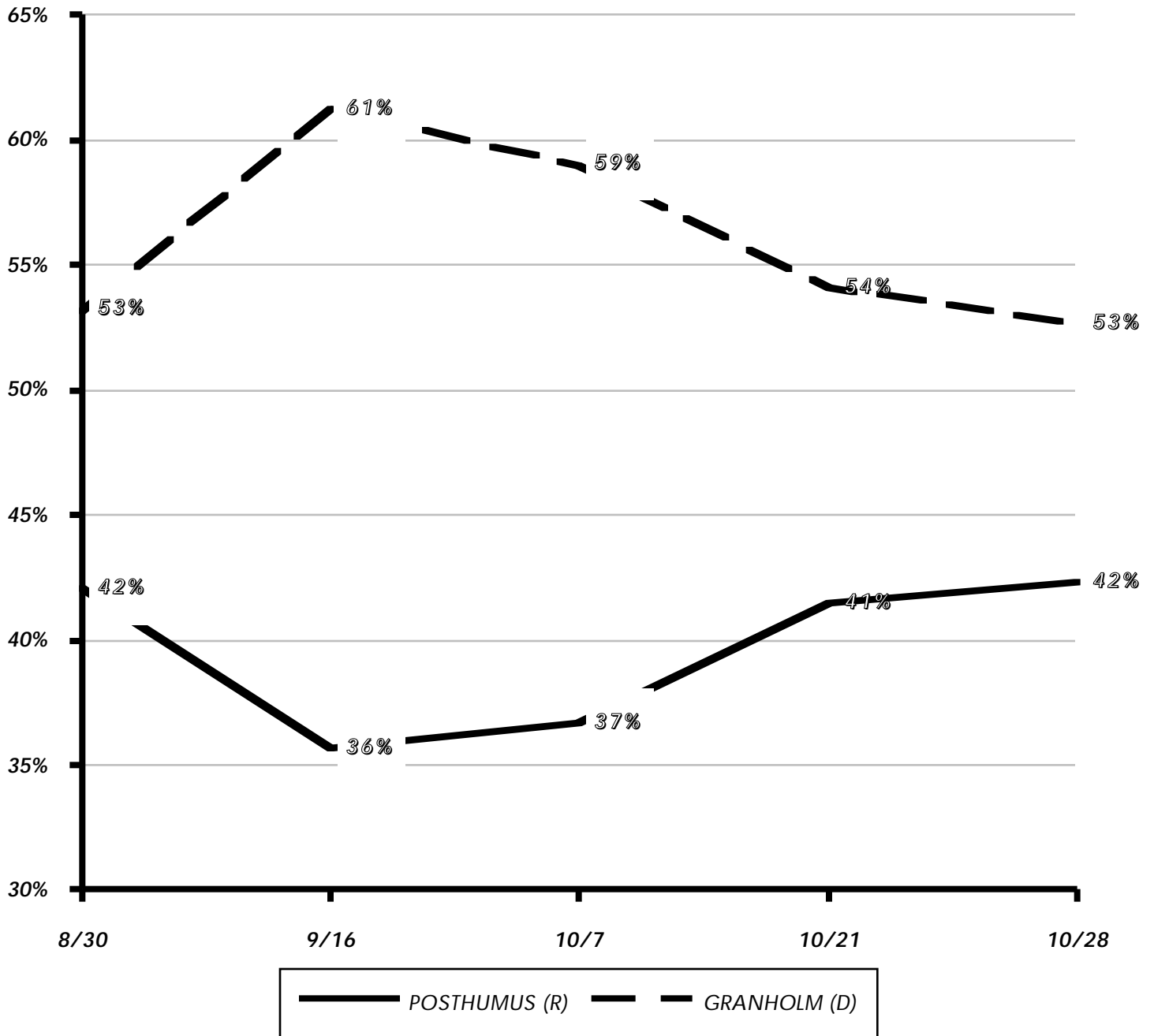
Q1: VOTE FOR GOVERNOR / HOW MALES ANSWERED, TRACKED OVER TIME



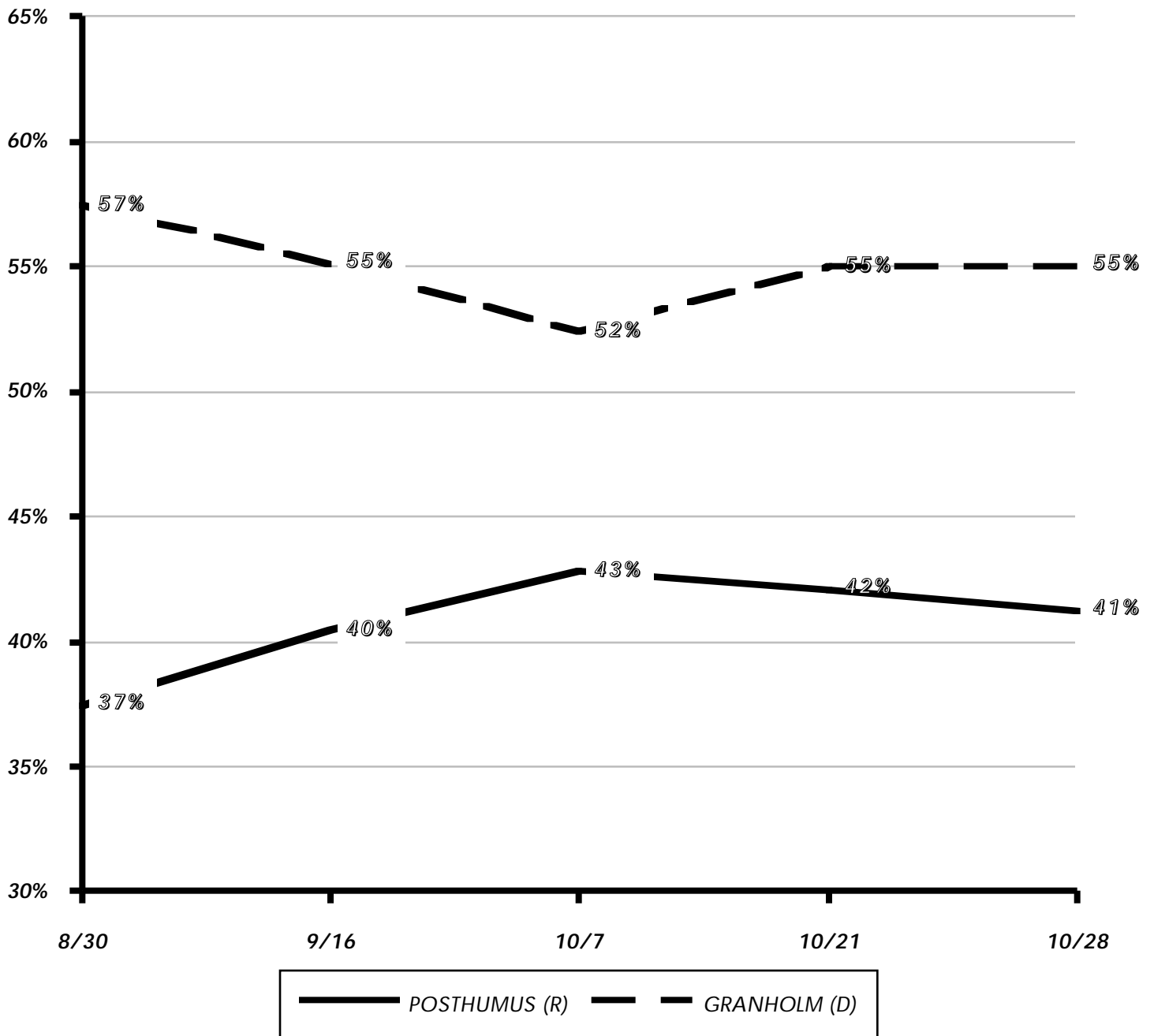
Q1: VOTE FOR GOVERNOR / HOW FEMALES ANSWERED, TRACKED OVER TIME



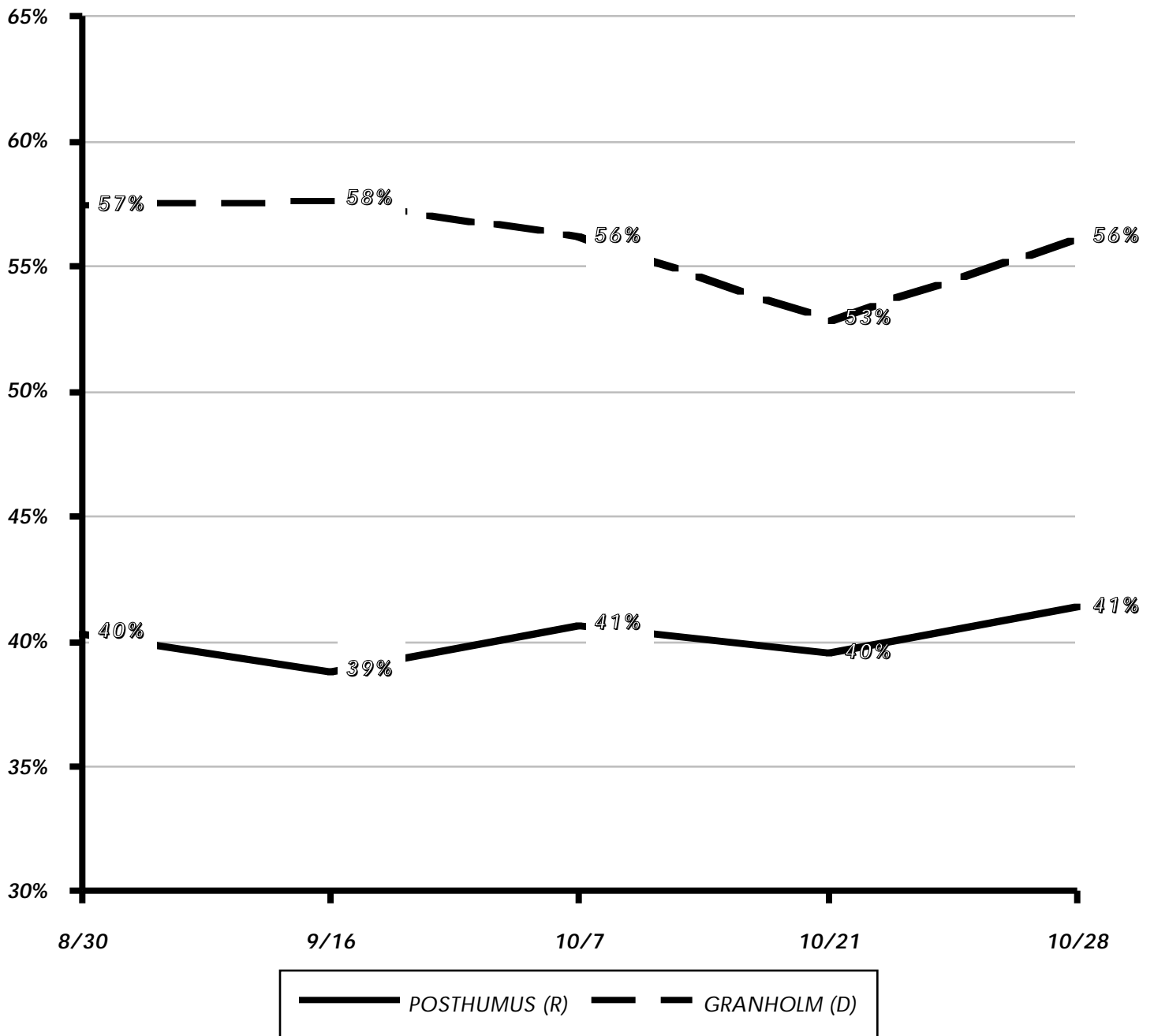
Q1: VOTE FOR GOVERNOR / HOW THOSE AGE 18-34 ANSWERED, TRACKED OVER TIME



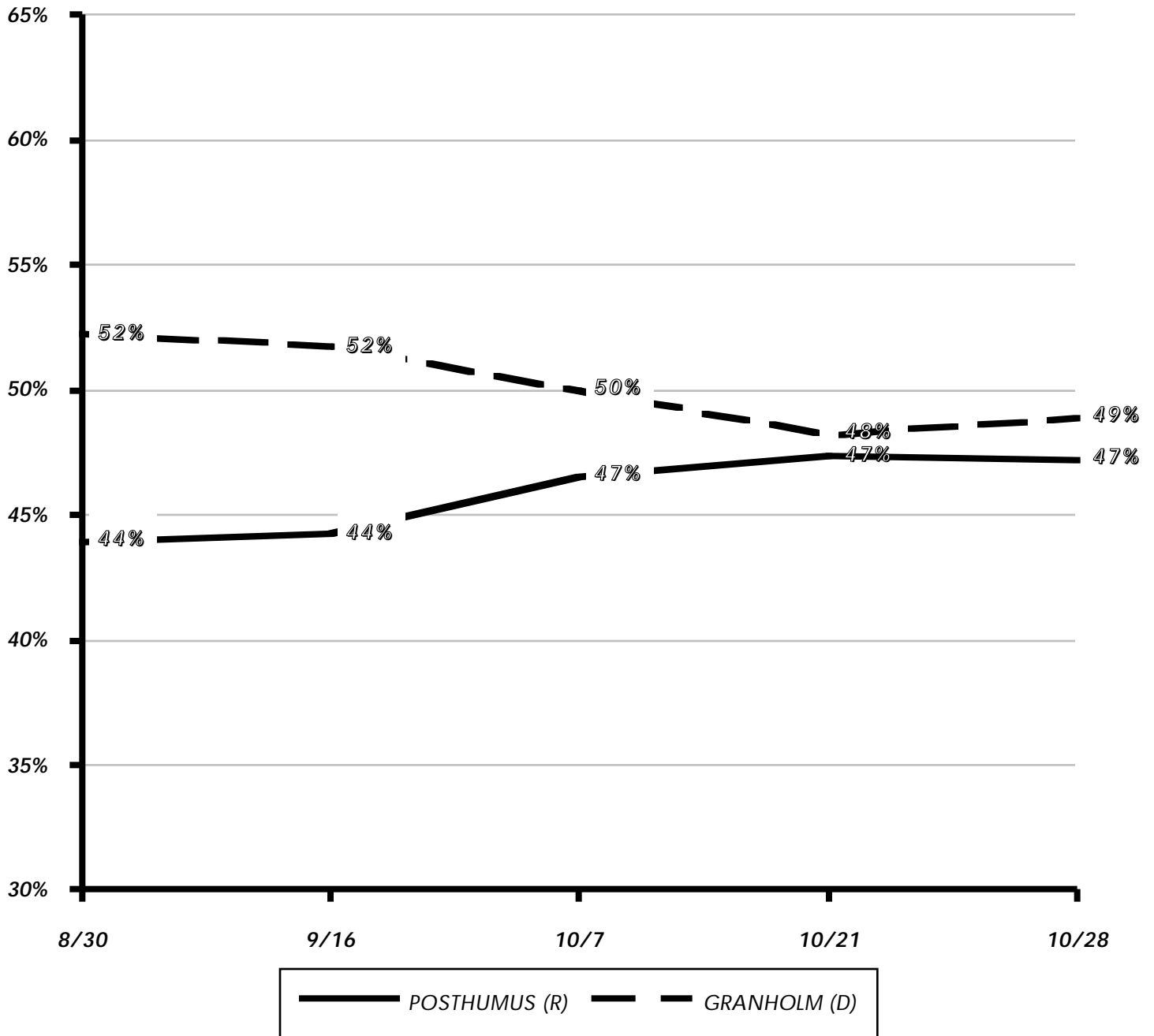
Q1: VOTE FOR GOVERNOR / HOW THOSE AGE 35-54 ANSWERED, TRACKED OVER TIME



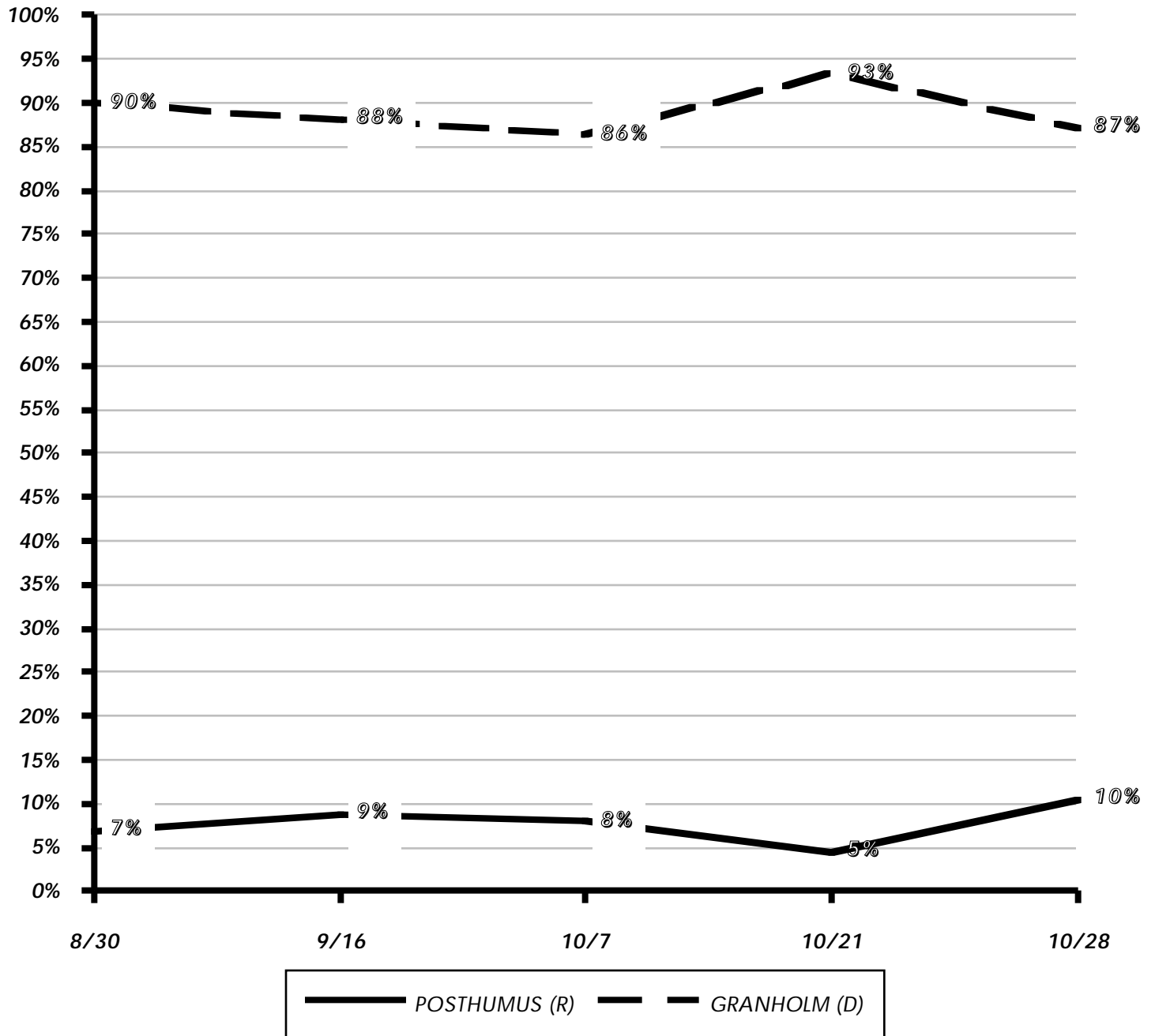
Q1: VOTE FOR GOVERNOR / HOW THOSE AGE 55+ ANSWERED, TRACKED OVER TIME



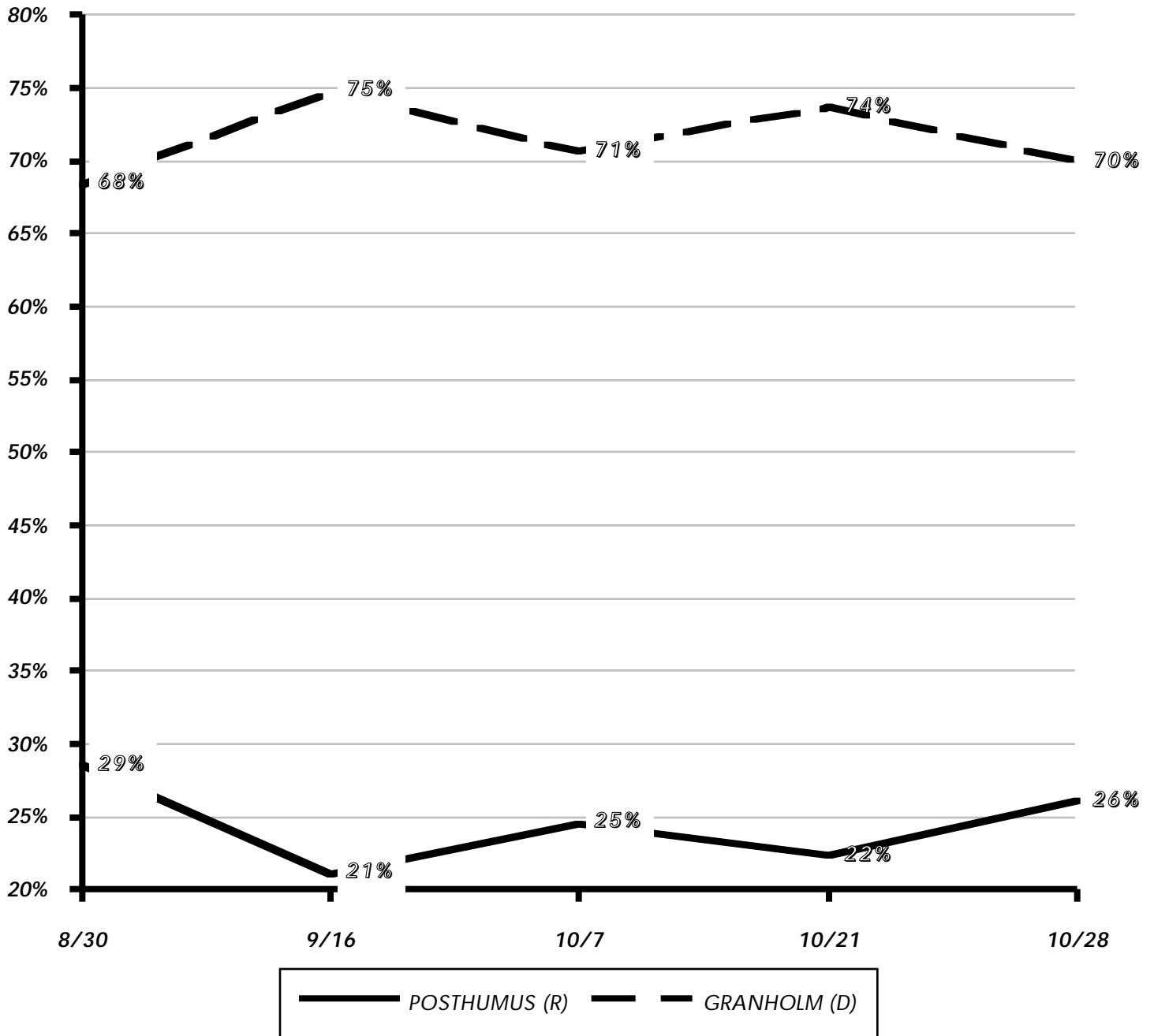
Q1: VOTE FOR GOVERNOR / HOW WHITES ANSWERED, TRACKED OVER TIME



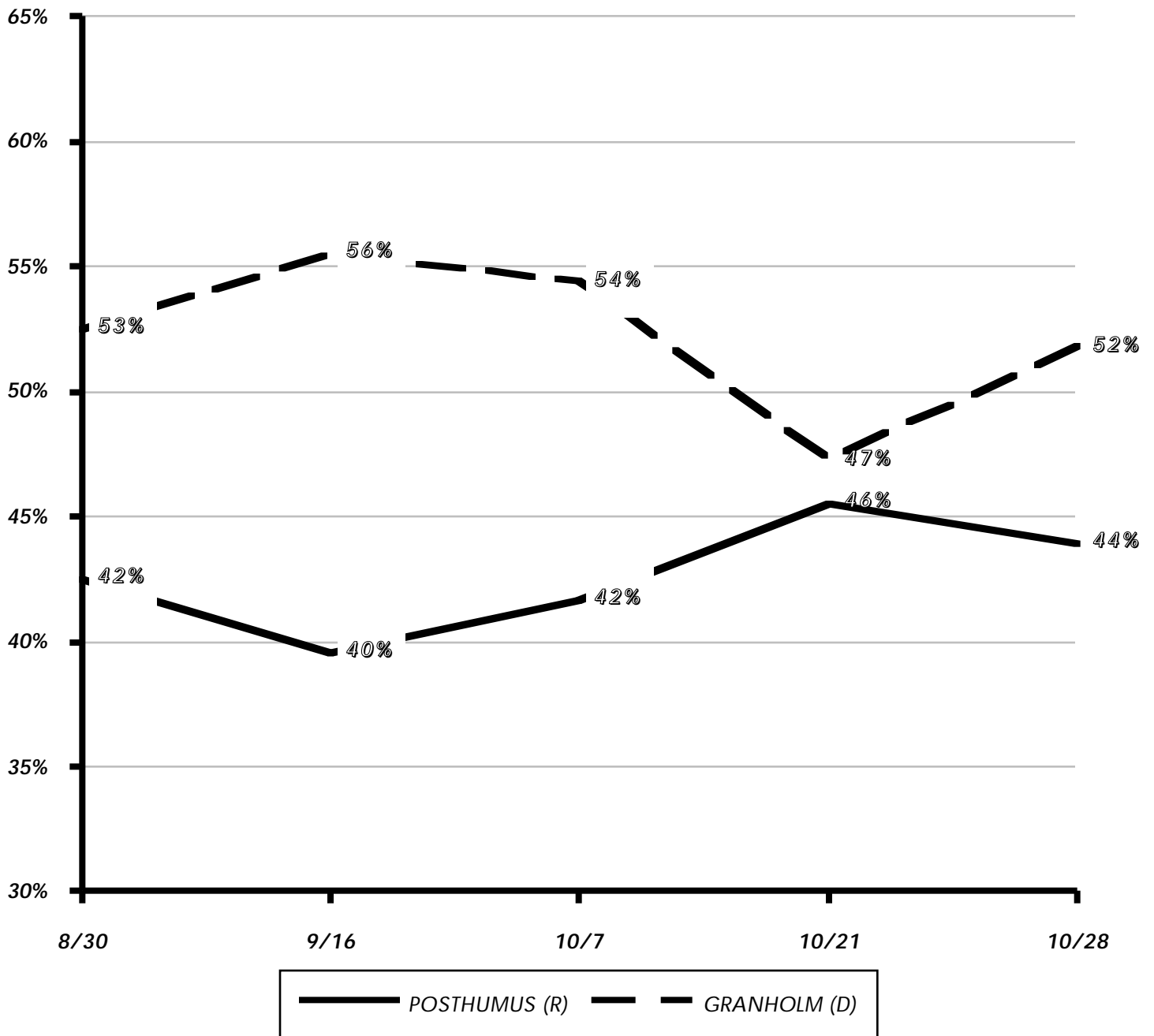
Q1: VOTE FOR GOVERNOR / HOW AFRICAN-AMERICANS ANSWERED, TRACKED OVER TIME



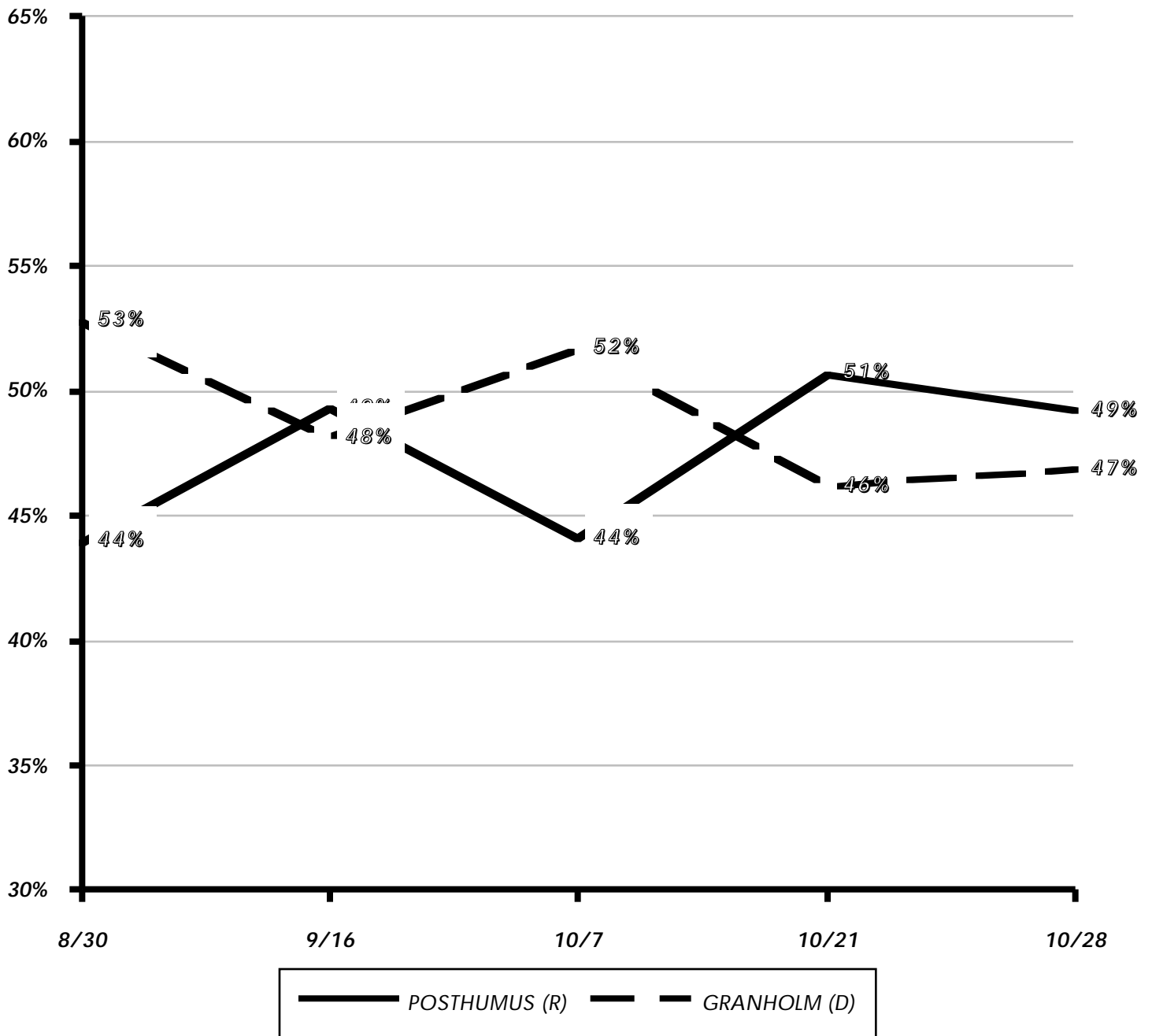
Q1: VOTE FOR GOVERNOR / HOW DETROIT ANSWERED, TRACKED OVER TIME



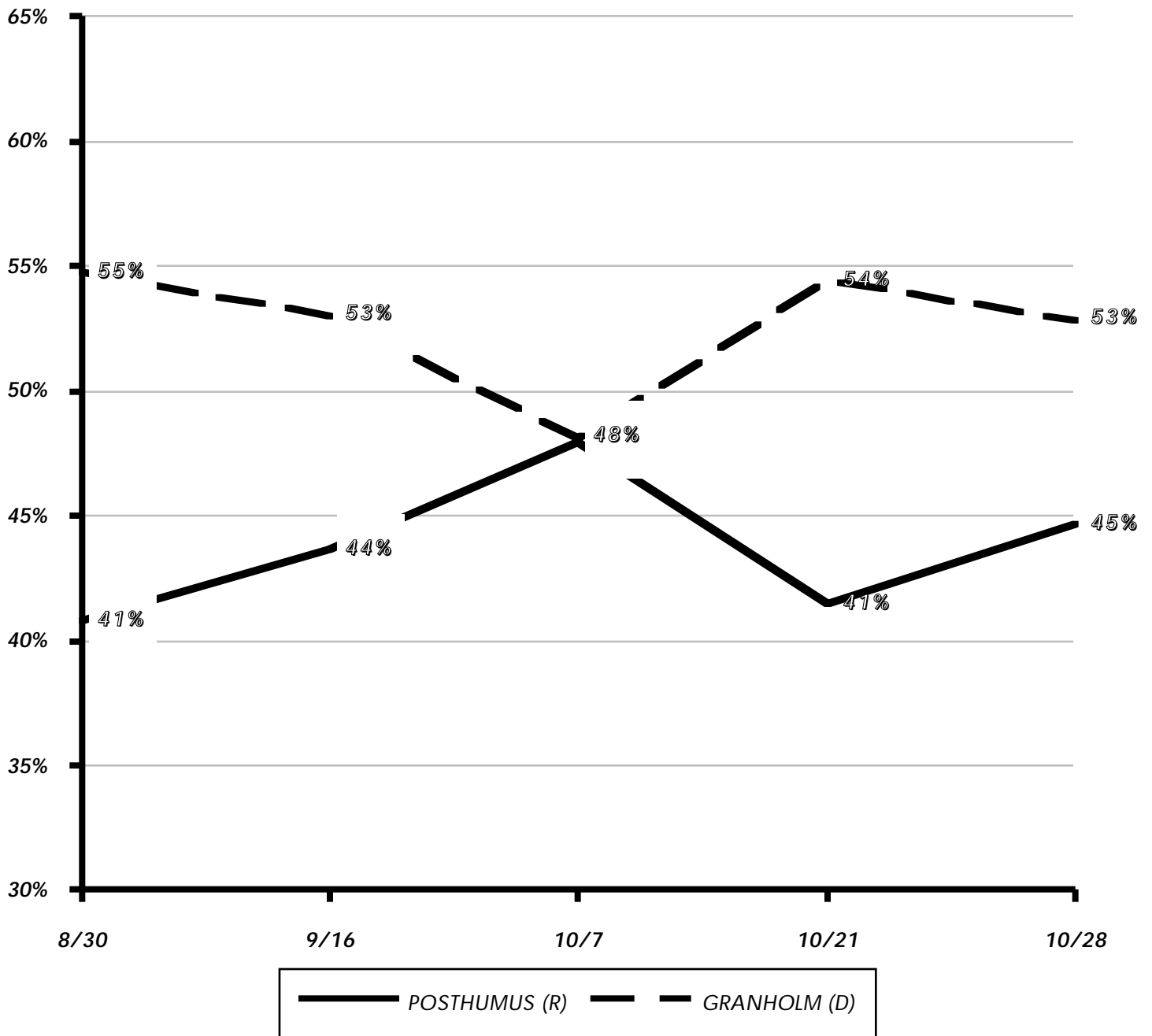
Q1: VOTE FOR GOVERNOR / HOW DETROIT SUBURBS ANSWERED, TRACKED OVER TIME



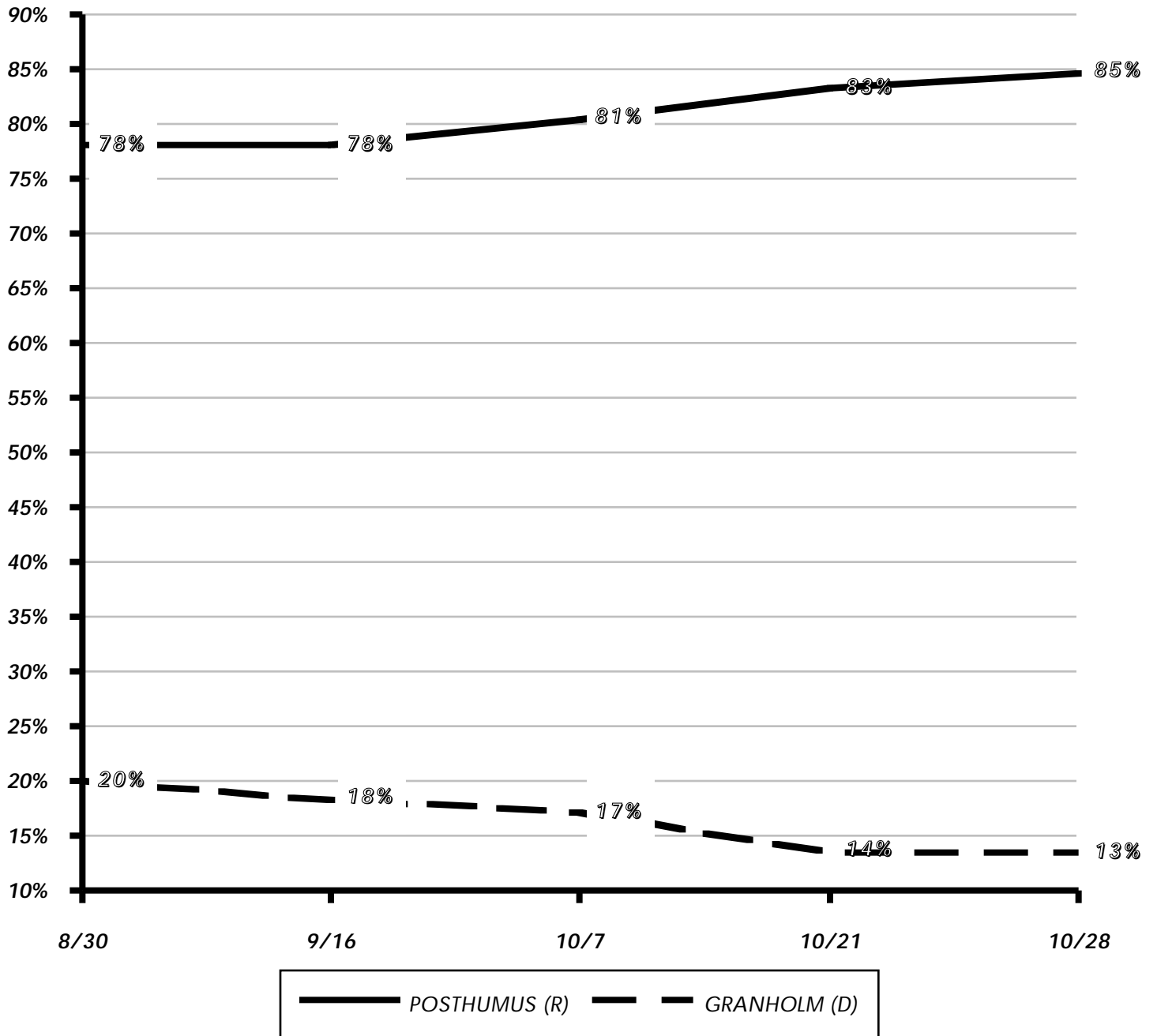
Q1: VOTE FOR GOVERNOR / HOW GRAND RAPIDS ANSWERED, TRACKED OVER TIME



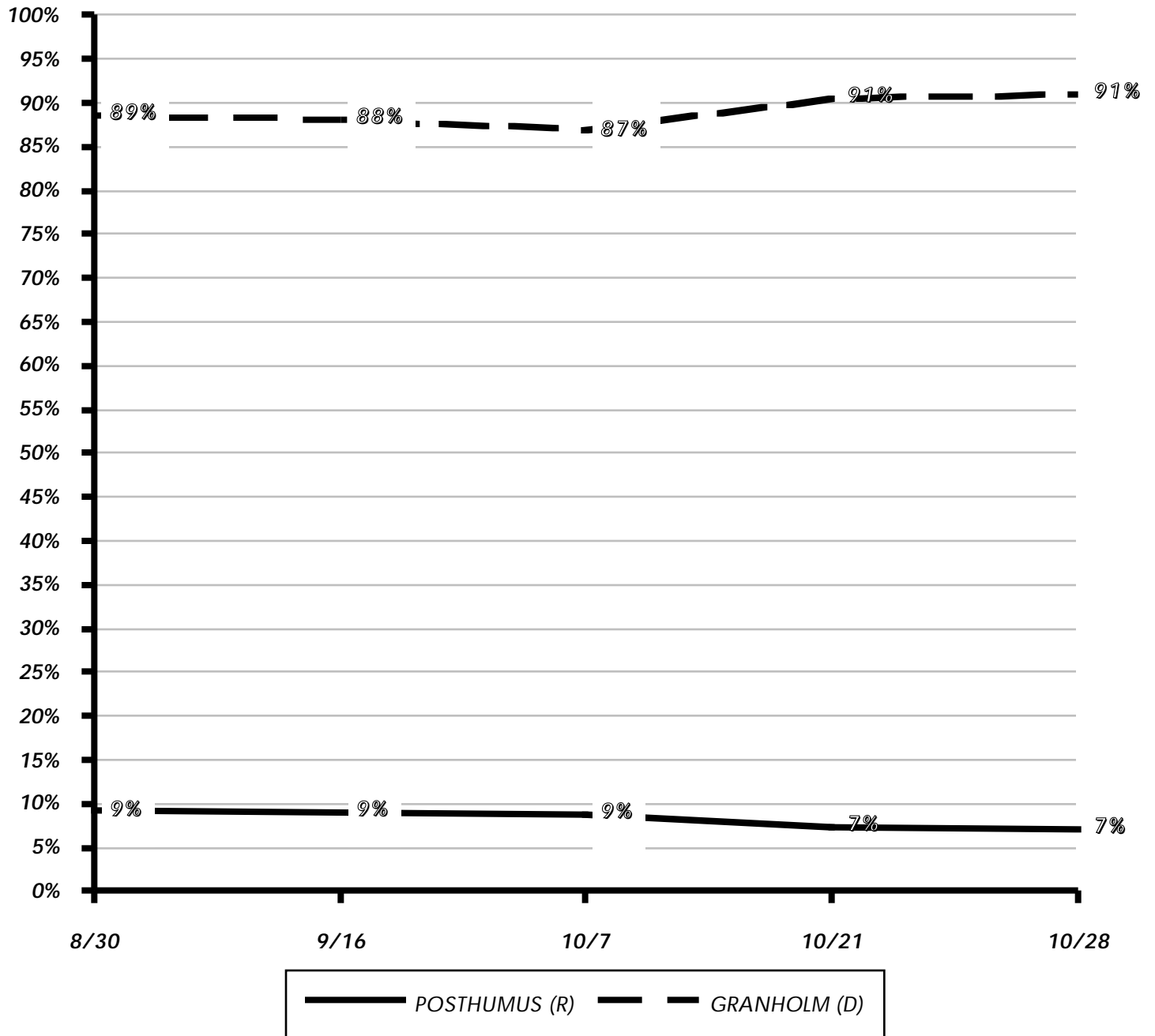
Q1: VOTE FOR GOVERNOR / HOW THE REST OF MICHIGAN ANSWERED, TRACKED OVER TIME



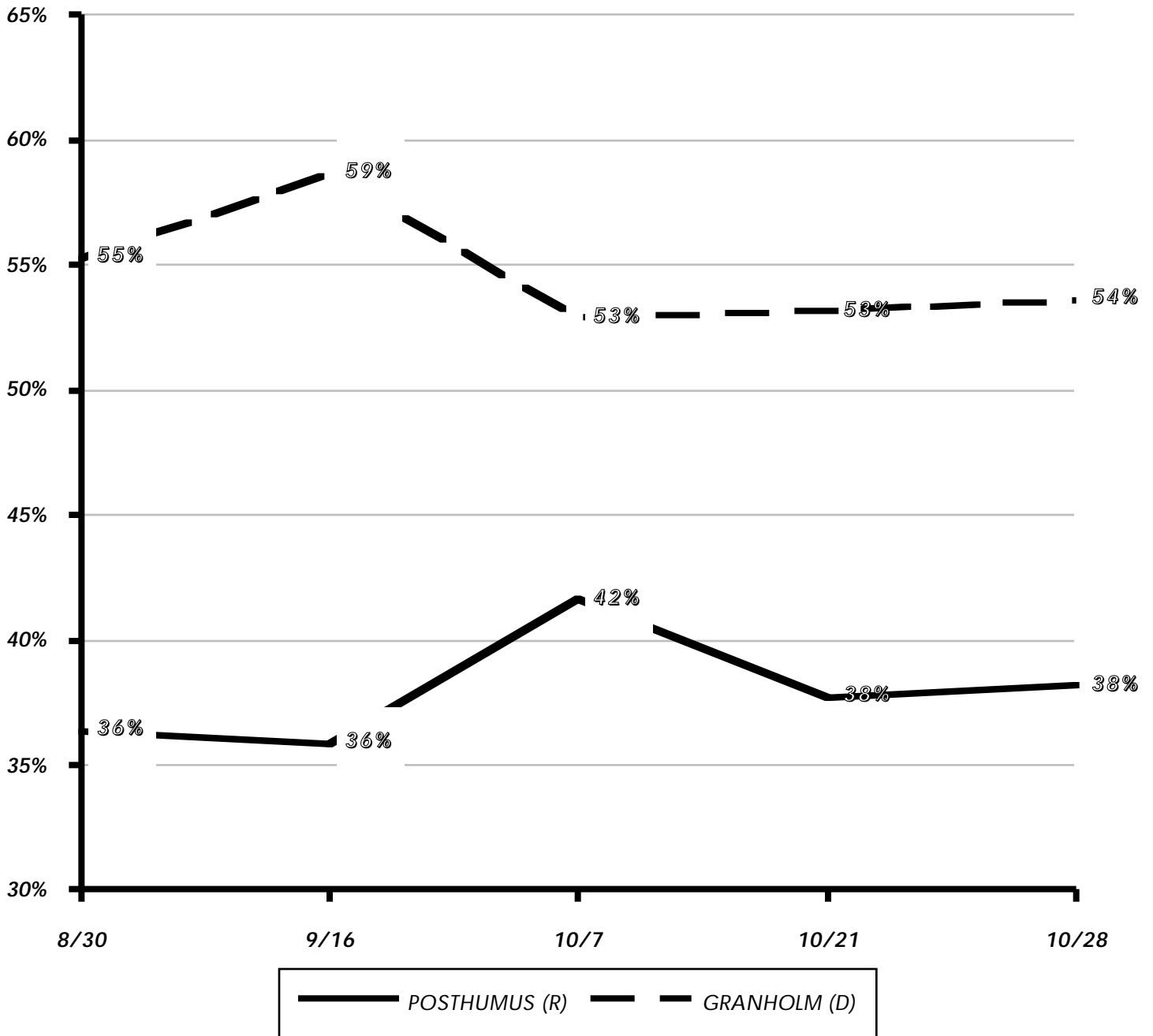
Q1: VOTE FOR GOVERNOR / HOW REPUBLICANS ANSWERED, TRACKED OVER TIME



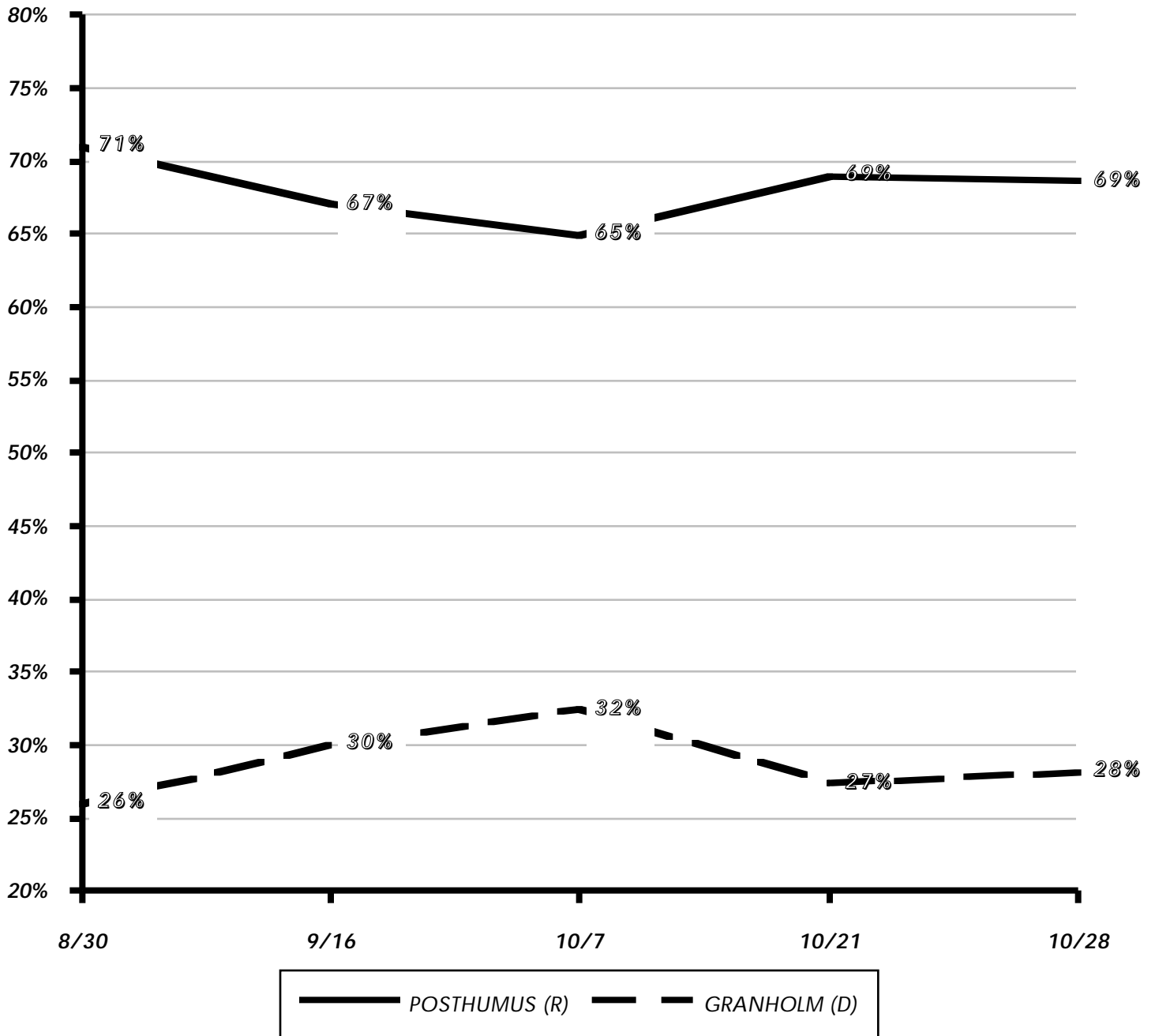
Q1: VOTE FOR GOVERNOR / HOW DEMOCRATS ANSWERED, TRACKED OVER TIME



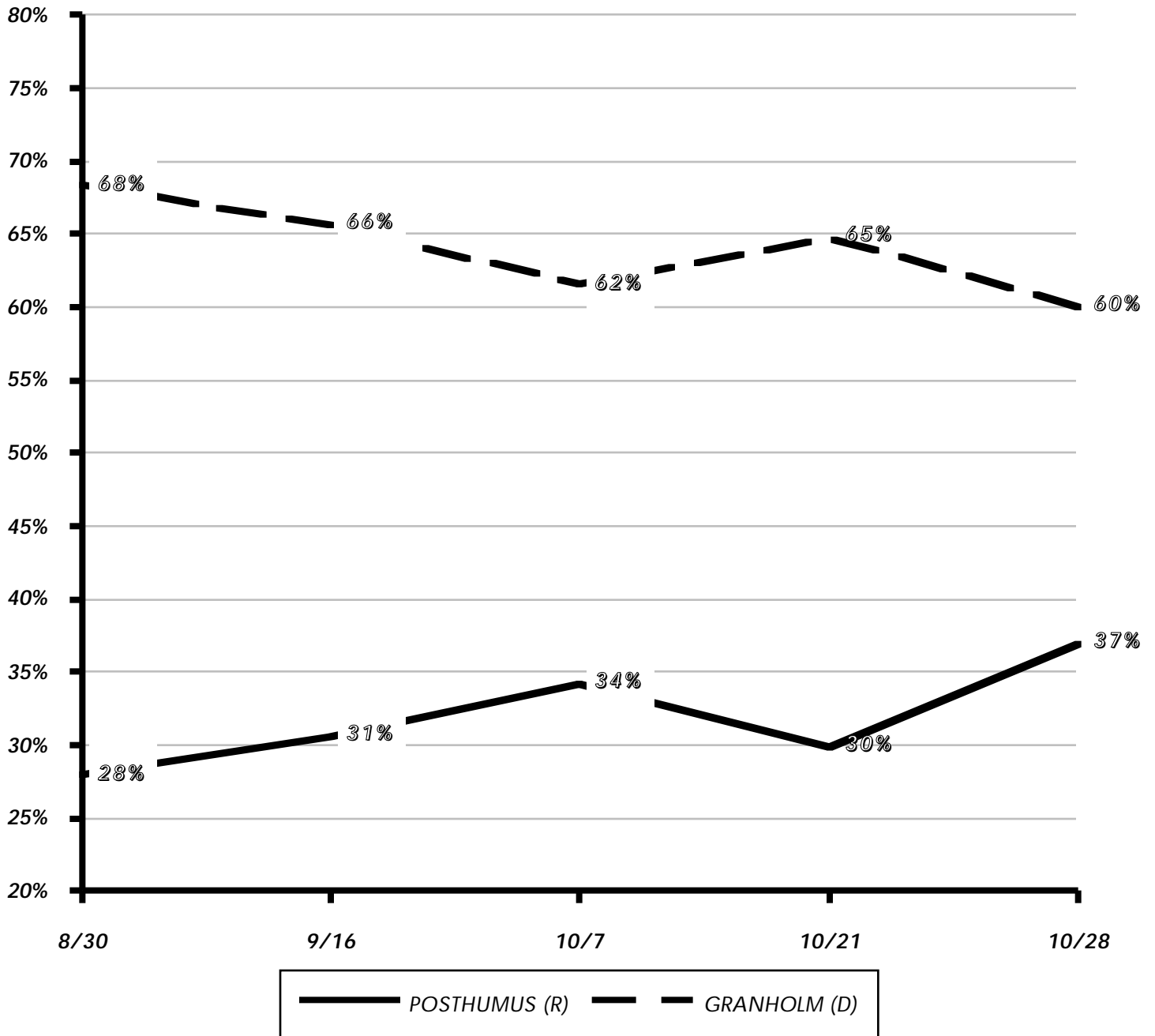
Q1: VOTE FOR GOVERNOR / HOW INDEPENDENTS ANSWERED, TRACKED OVER TIME



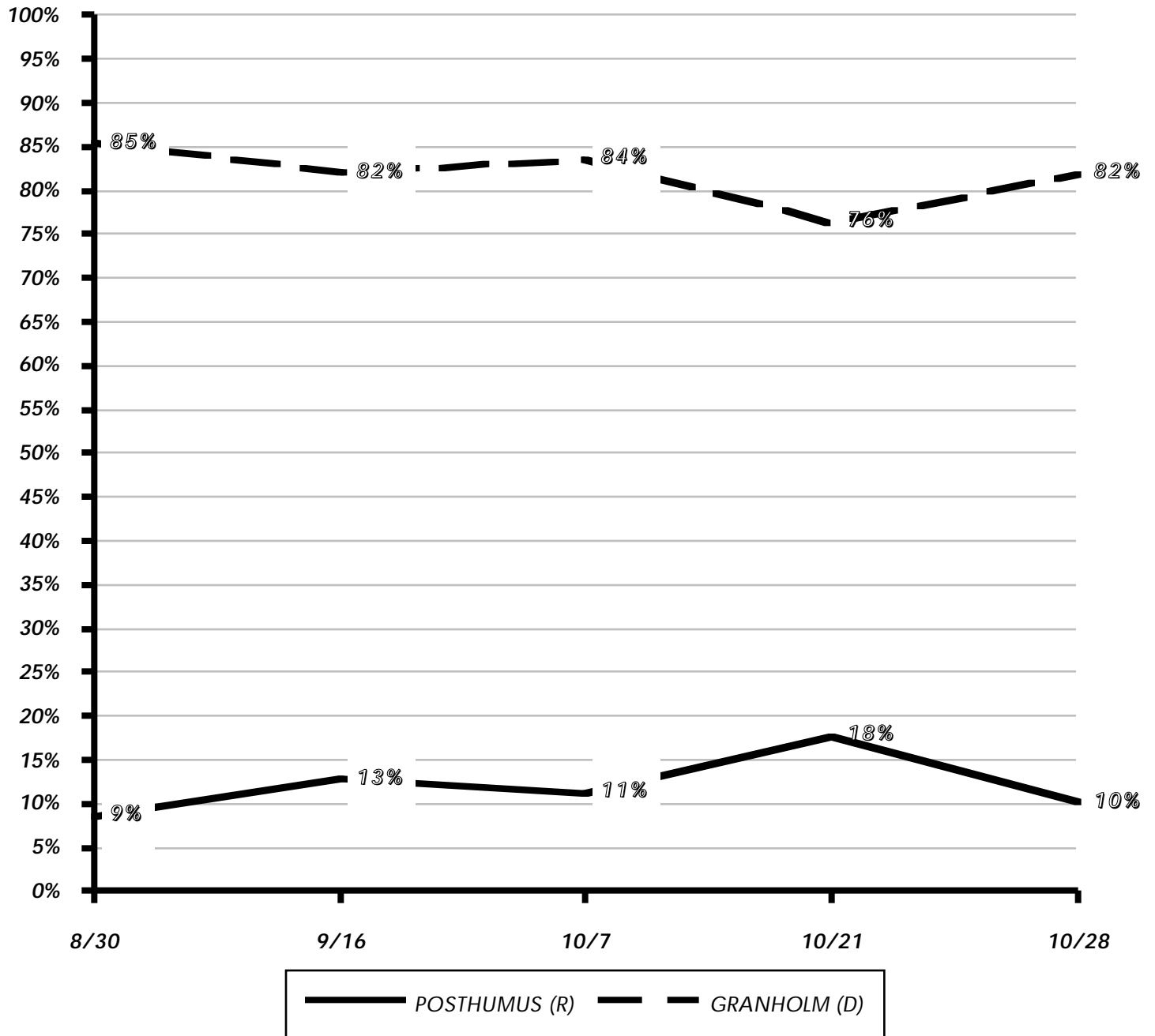
Q1: VOTE FOR GOVERNOR / HOW CONSERVATIVES ANSWERED, TRACKED OVER TIME



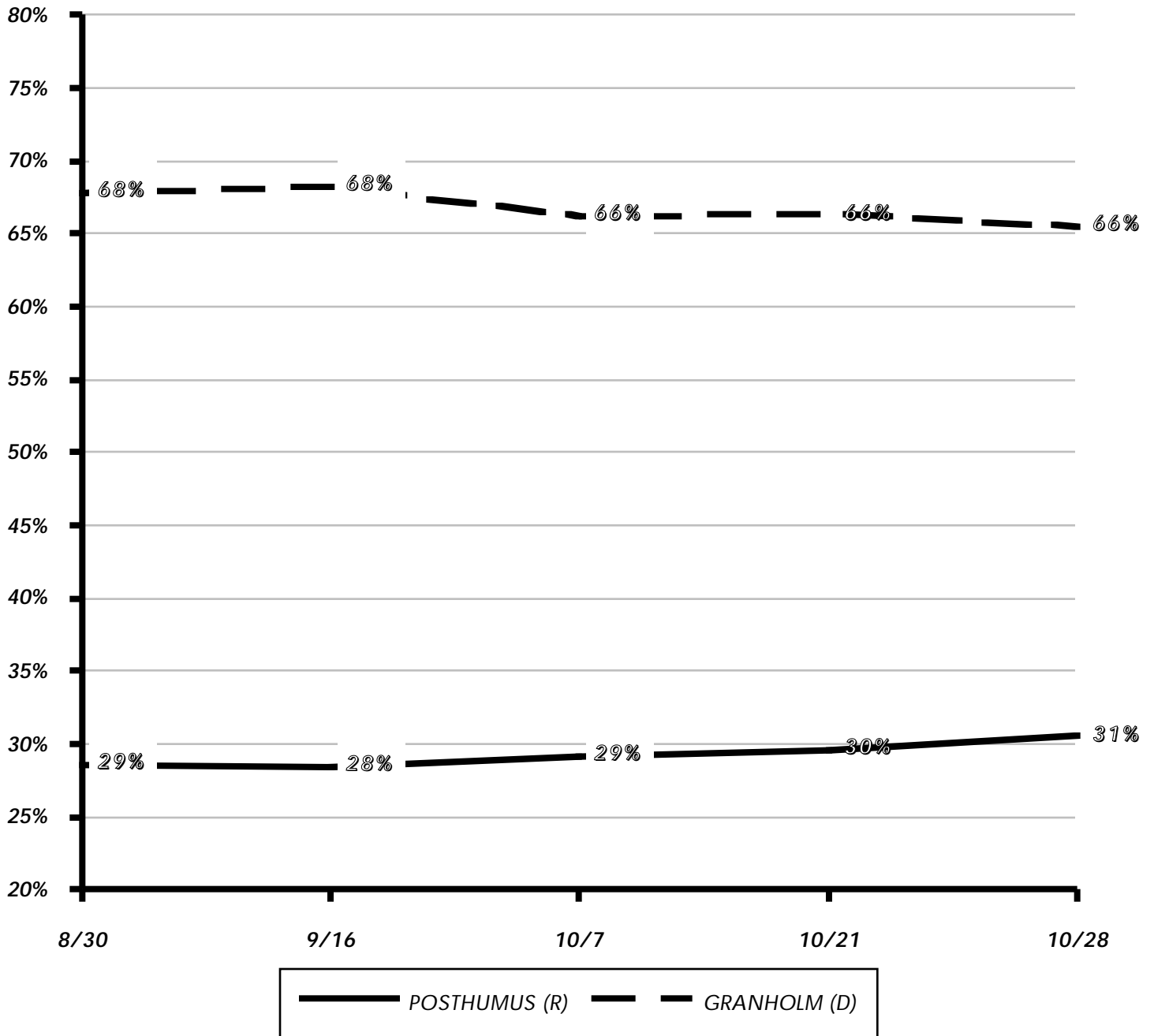
Q1: VOTE FOR GOVERNOR / HOW MODERATES ANSWERED, TRACKED OVER TIME



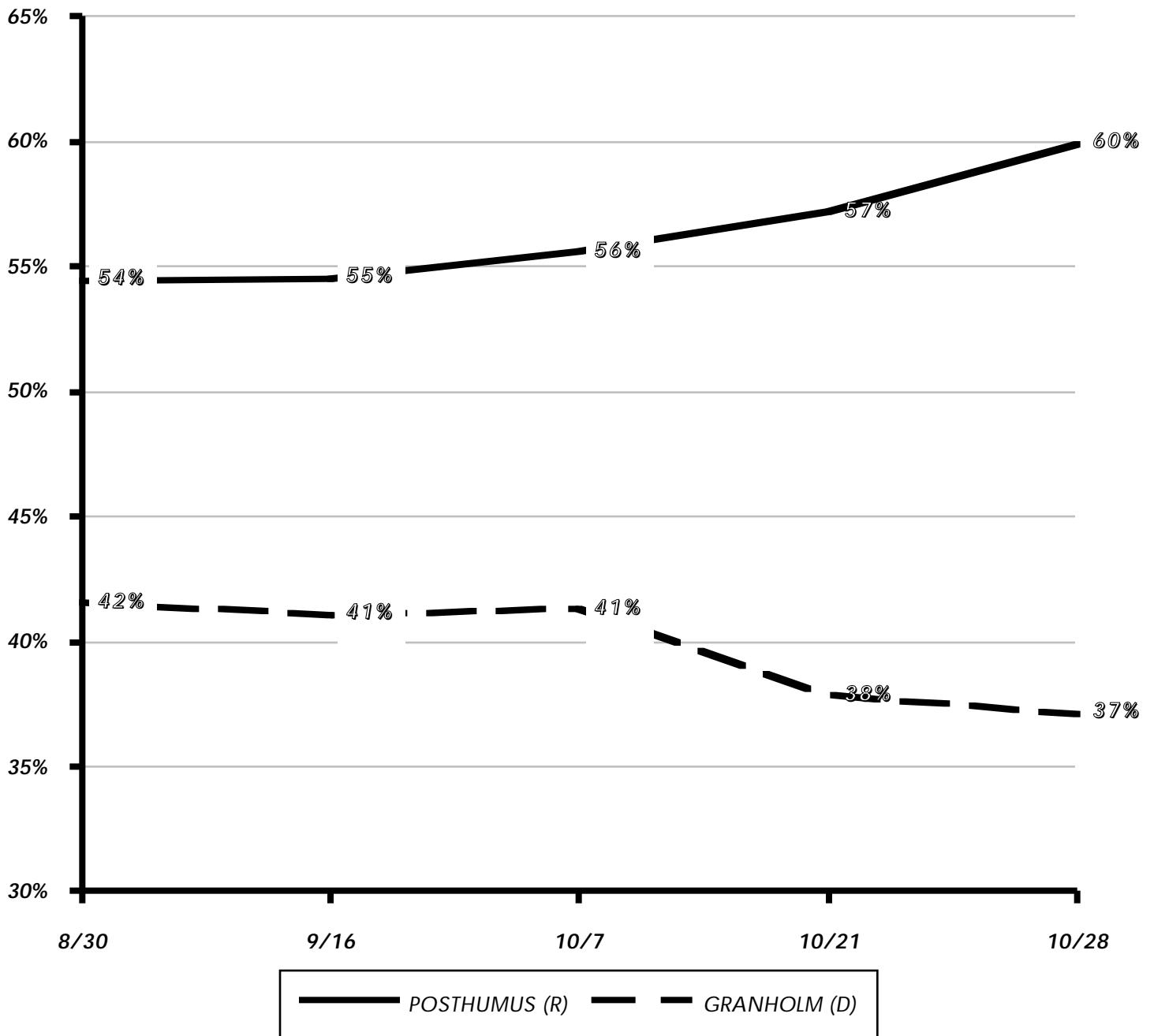
Q1: VOTE FOR GOVERNOR / HOW LIBERALS ANSWERED, TRACKED OVER TIME



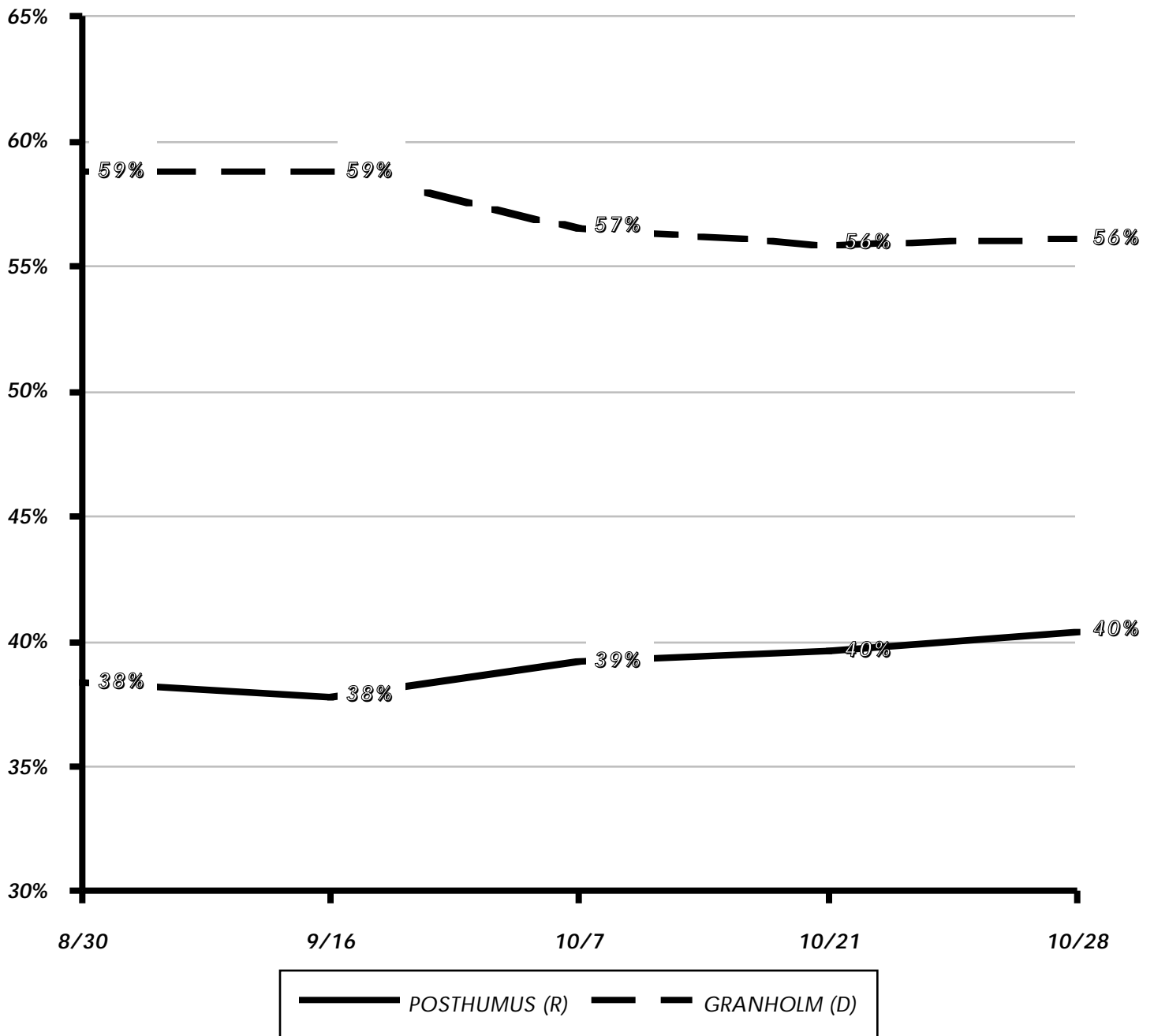
Q1: VOTE FOR GOVERNOR / HOW PRO-CHOICE VOTERS ANSWERED, TRACKED OVER TIME



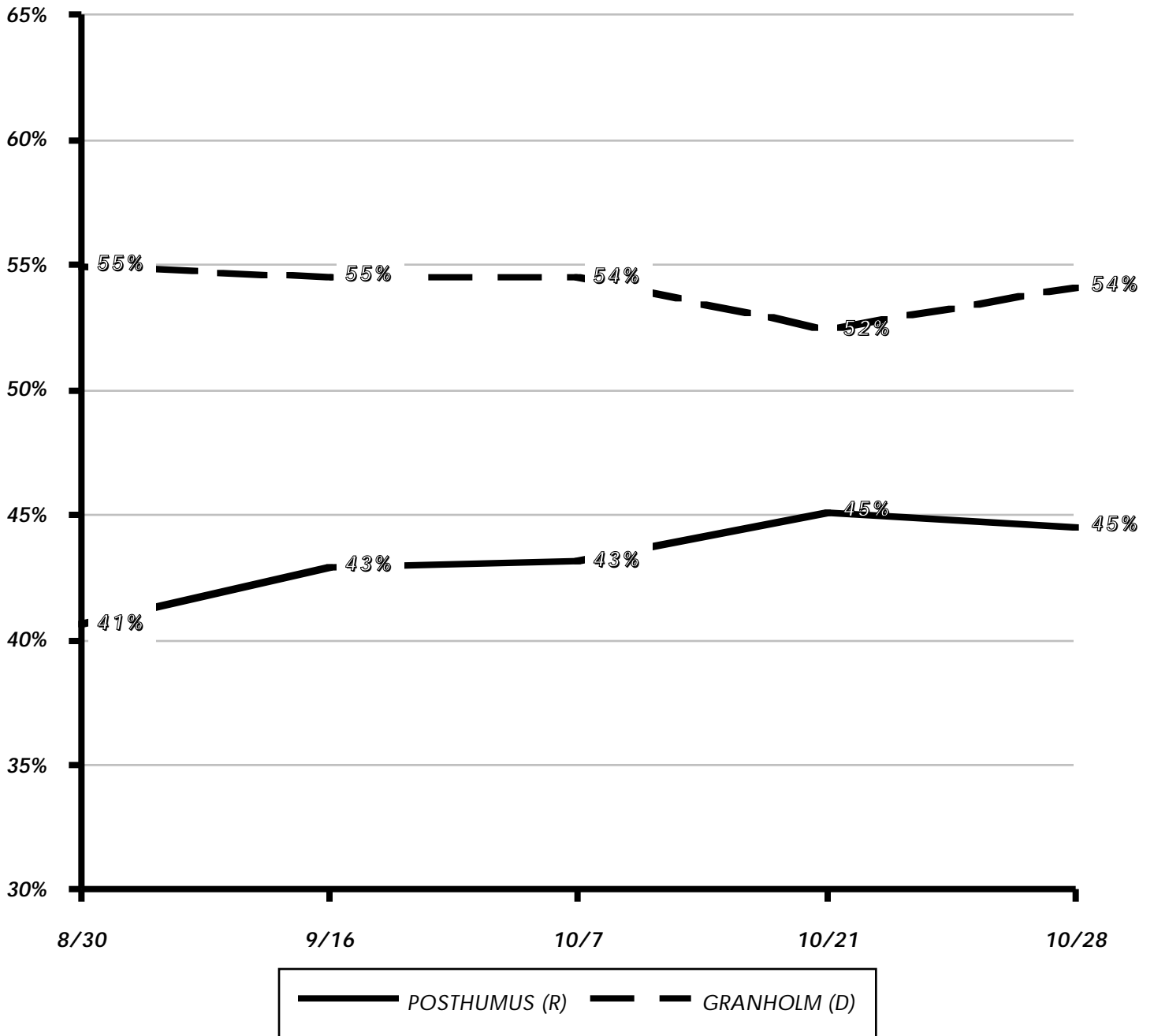
Q1: VOTE FOR GOVERNOR / HOW PRO-LIFE VOTERS ANSWERED, TRACKED OVER TIME



Q1: VOTE FOR GOVERNOR / HOW THOSE WHO WANT SCHOOL FUNDING CHANGED ANSWERED



Q1: VOTE FOR GOVERNOR / HOW THOSE WHO DON'T WANT SCHOOL FUNDING CHANGED ANSWERED





Q1: VOTE FOR GOVERNOR / RESPONSES COMPARED BY PERCENTAGES AND BY INDEX

OVERALL  
 REPUBLICAN  
 DEMOCRAT  
 INDEPENDENT  
 CONSERVATIVE  
 MODERATE  
 LIBERAL  
 PRO-CHOICE  
 PRO-LIFE  
 CHANGE FUNDING  
 DON'T CHANGE FUNDING

**RESPONSES SORTED BY DEMOGRAPHIC CATEGORY**

POSTHUMUS (R)  
 GRANHOLM (D)  
 UNDECIDED / OTHER

42%	85%	7%	38%	69%	37%	10%	31%	60%	40%	45%				
55%	13%	91%	54%	28%	60%	82%	66%	37%	56%	54%				
4%	2%	2%	8%	3%	3%	8%	4%	3%	3%	1%				
100%	100%	100%	100%	100%	100%	100%	100%	100%	100%	100%				

**DEMOGRAPHIC SUBPOPULATIONS INDEXED TO OVERALL RESPONSES**

POSTHUMUS (R)  
 GRANHOLM (D)  
 UNDECIDED / OTHER

100	204	17	92	165	89	24	74	144	97	107				
100	25	166	98	51	110	150	120	68	102	99				
100	49	50	225	86	80	216	105	81	95	36				

OVERALL  
 REPUBLICAN  
 DEMOCRAT  
 INDEPENDENT  
 CONSERVATIVE  
 MODERATE  
 LIBERAL  
 PRO-CHOICE  
 PRO-LIFE  
 CHANGE FUNDING  
 DON'T CHANGE FUNDING





The following is a material part of this report and should be included when data is referenced:

How this poll was conducted: This SurveyUSA poll was conducted by telephone in the voice of a professional announcer. All respondents heard the questions asked identically. Page 1 of this report contains: the geography that was surveyed; the dates interviews were conducted; the news organization that paid for the research; and the name of the random sample provider. The universe of respondents and the margin of error are stated on Page 2 of this report, and if restated on one or more subsequent pages, it is because the universe and margin of error changed for those subsequent questions. Where necessary, responses were weighted according to age, gender, ethnic origin, geographical area and number of adults and number of voice telephone lines in the household, so that the sample would reflect the actual demographic proportions in the population, using most recent U.S. Census estimates. In theory, with the stated sample size, one can say with 95% certainty that the results would not vary by more than the stated margin of error, in one direction or the other, had the entire universe of respondents been interviewed with complete accuracy. There are other possible sources of error in all surveys that may be more serious than theoretical calculations of sampling error. These include refusals to be interviewed, question wording and question order, weighting by demographic control data and the manner in which respondents are filtered (such as, determining who is a likely voter). It is difficult to quantify the errors that may result from these factors. Fieldwork for this survey was done by SurveyUSA of Verona, NJ. These statements conform to the principles of disclosure of the National Council of Public Polls.