

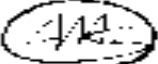
SC GOV: HODGES & SANFORD CLOSE; SENATE: GRAHAM UP OVER SANDERS

* EXCLUSIVE SURVEYUSA RESEARCH RESULTS *

YOU MUST CREDIT SURVEYUSA IF YOU AIR, CITE
OR REPRINT THESE RESULTS IN WHOLE OR PART

HERE ARE SOME OF THE KEY FINDINGS FROM THIS SURVEY

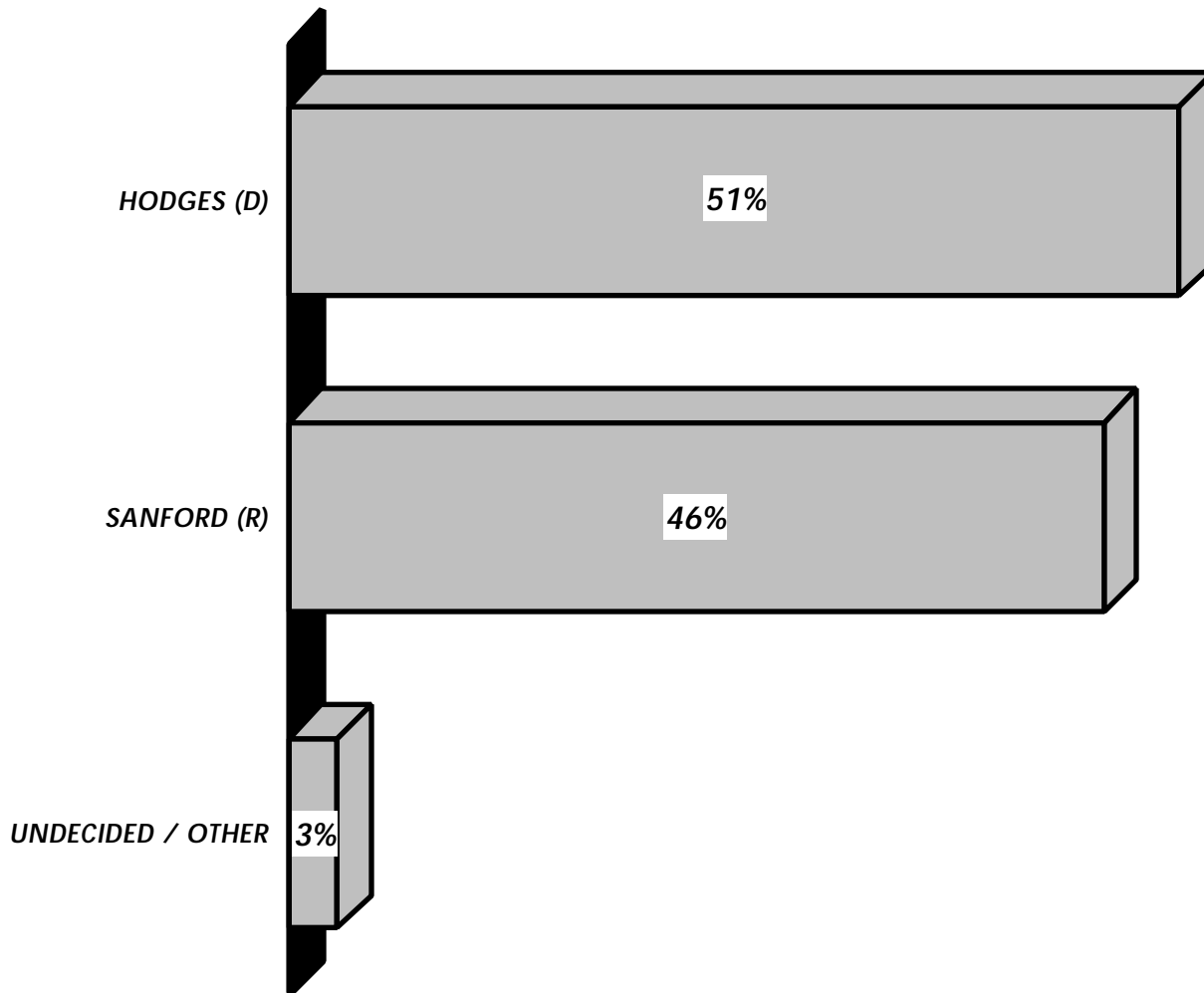
- * IN A GENERAL ELECTION TODAY, INCUMBENT DEMOCRATIC GOVERNOR JIM HODGES & GOP CHALLENGER MARK SANFORD ARE SEPARATED BY 5 POINTS, WHILE GOP SENATE CANDIDATE LINDSEY GRAHAM DEFEATS DEMOCRAT ALEX SANDERS, ACCORDING TO THIS LATEST EXCLUSIVE SURVEYUSA POLL OF 671 LIKELY VOTERS, CONDUCTED 10/18 + 10/19 + 10/20. ELECTION DAY IS 11/5.
- * COMPARED TO POLL 1 WEEK AGO: SANFORD HAS GAINED 1 PT TO 46%, HODGES IS FLAT AT 51%.
- * GRAHAM IS UP 3 PTS TO 53%, SANDERS DOWN 2 TO 44%. THE GOP LEAD WAS 4 PTS, NOW 9.
- * DEMOCRATS BACK HODGES 85 TO 13. REPUBLICANS BACK SANFORD 81 TO 17. INDYS SPLIT.
- * FOR GOV: HODGES TAKES CENTRAL SC, SANFORD WINS IN WEST. EASTERN SC IS SPLIT.
- * FOR SENATE: GRAHAM STRONG BOTH EAST AND WEST, SANDERS ON TOP IN CENTRAL SC.
- * SURVEY OF 900 SOUTH CAROLINA ADULTS, INCLUDING 749 REGISTERED AND 671 LIKELY VOTERS.

RESEARCH CONDUCTED E.T.	021018 16: 01-20: 56 021019 11: 00-20: 31 021020 12: 03-	APPROVED
RESPONDENTS DRAWN FROM	THE ENTIRE STATE OF SOUTH CAROLINA	
RANDOM SAMPLE SELECTED BY	SURVEY SAMPLING, INC. 	

FOR COMMENT, ADDITIONAL ANALYSIS OR ACTUALITY, CALL 1-800-786-8000

Q1: VOTE FOR GOVERNOR / ALL LIKELY VOTERS

VOTERS IN SOUTH CAROLINA WILL ELECT A GOVERNOR AND A U. S. SENATOR ON NOVEMBER 5TH. IF THE ELECTION FOR GOVERNOR WERE TODAY, AND YOU WERE STANDING IN THE VOTING BOOTH RIGHT NOW, WHO WOULD YOU VOTE FOR? DEMOCRAT JIM HODGES? OR REPUBLICAN MARK SANFORD?

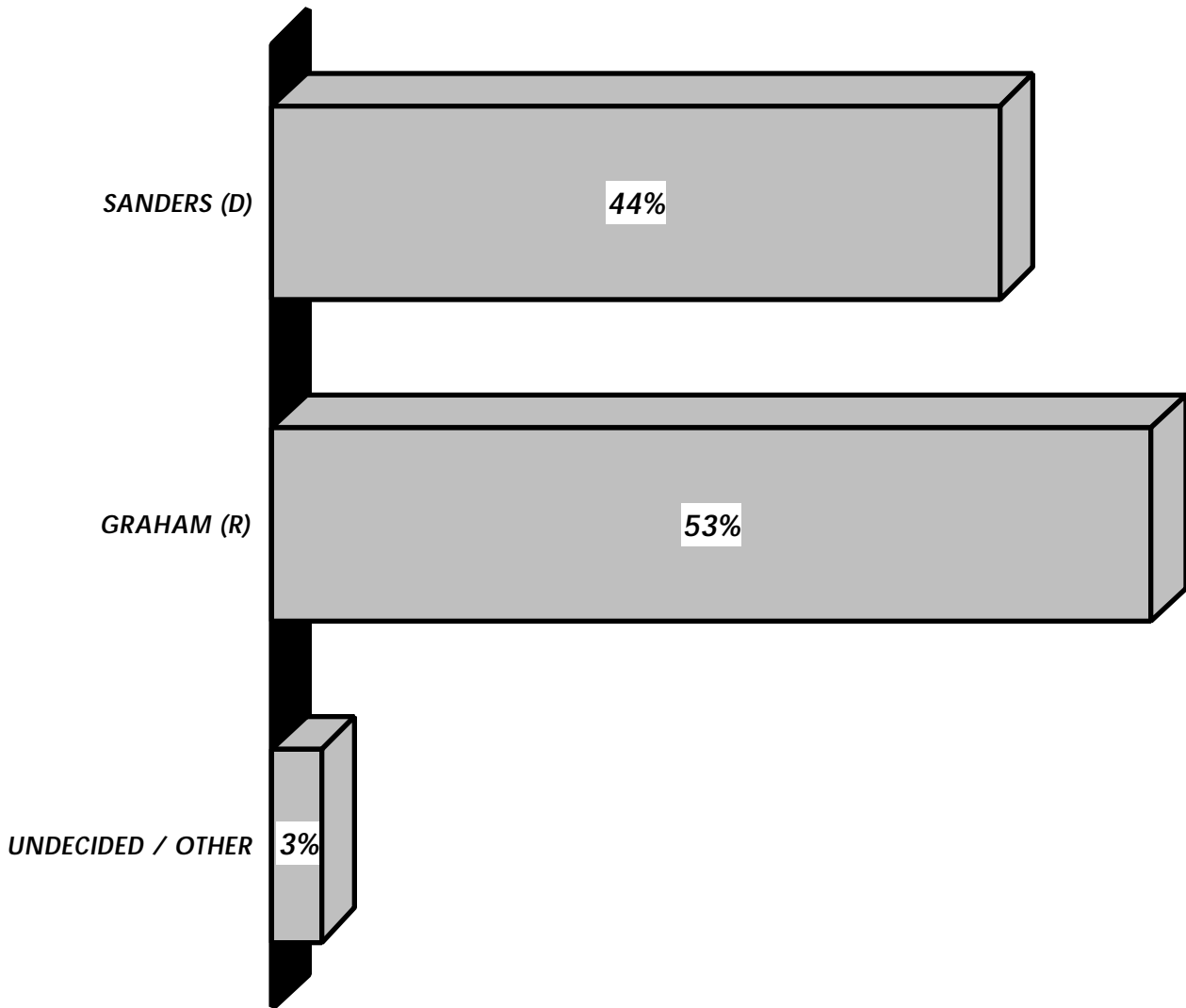


THIS IS A SURVEY OF	671	LIKELY VOTERS FROM THE ENTIRE STATE OF SOUTH CAROLINA
OVERALL RESULTS CONSIDERED SIGNIFICANT	±3.9%	A LARGER ± APPLIES TO SUBPOPULATIONS

RESULTS MAY NOT ADD TO 100%, BECAUSE PERCENTAGES ARE ROUNDED TO WHOLE NUMBERS

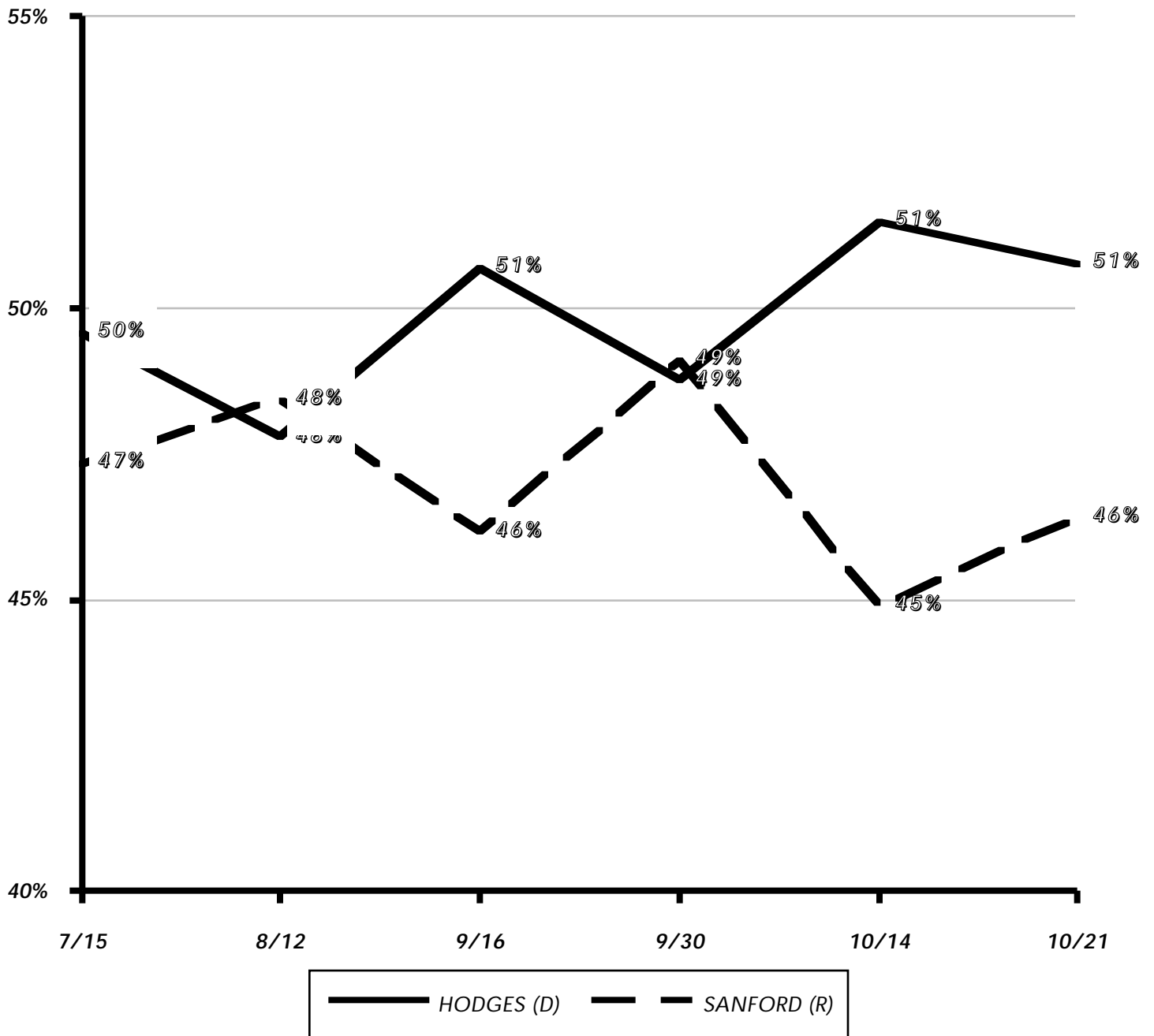
Q2: VOTE FOR SENATE / ALL LIKELY VOTERS

IF THE ELECTION FOR U. S. SENATE WERE TODAY, AND YOU WERE STANDING IN THE VOTING BOOTH RIGHT NOW, WHO WOULD YOU VOTE FOR? DEMOCRAT ALEX SANDERS? OR REPUBLICAN LINDSEY GRAHAM?

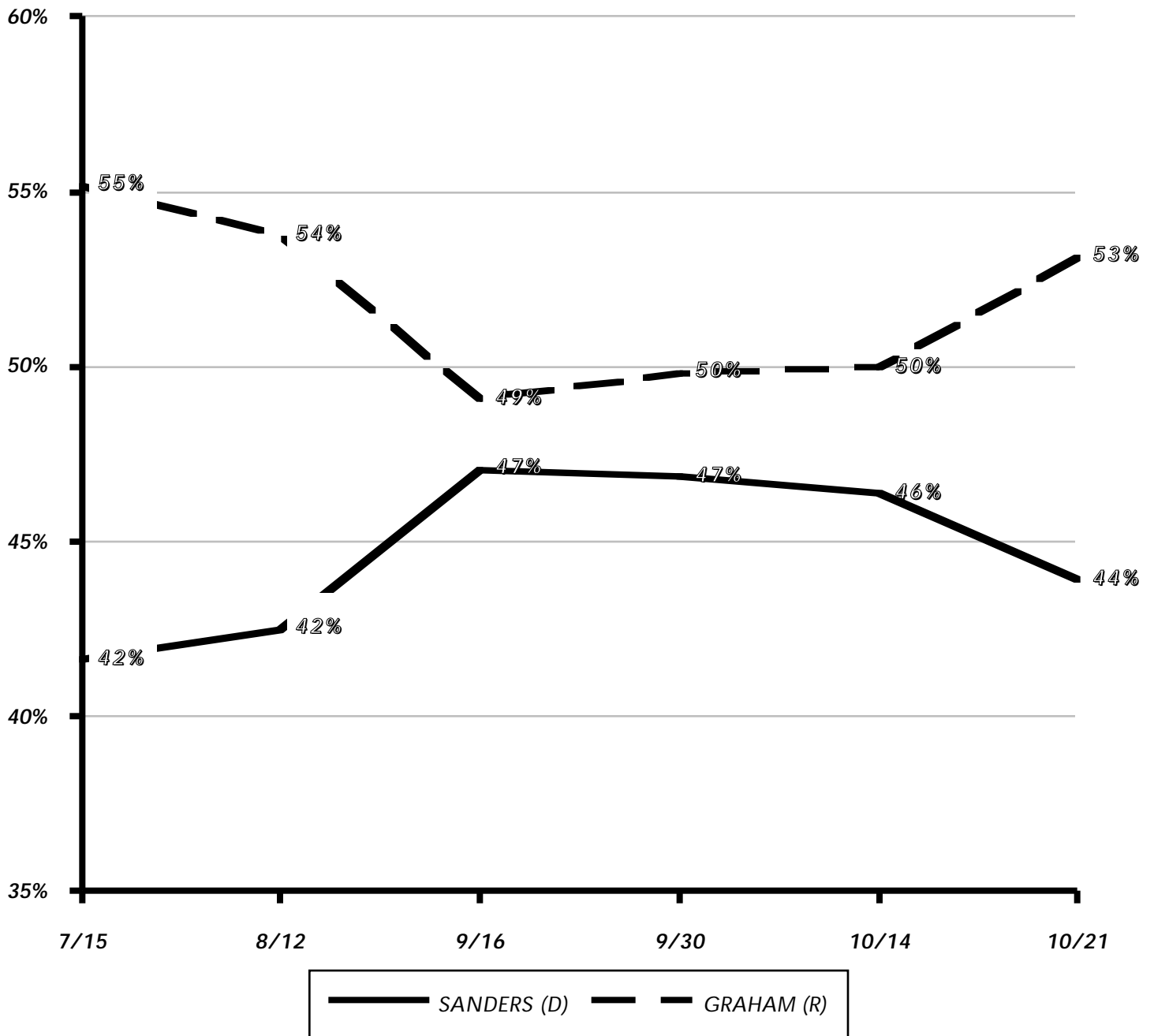


RESULTS MAY NOT ADD TO 100%, BECAUSE PERCENTAGES ARE ROUNDED TO WHOLE NUMBERS

Q1: VOTE FOR GOVERNOR / ALL LIKELY VOTERS, TRACKED OVER TIME



Q2: VOTE FOR SENATE / ALL LIKELY VOTERS, TRACKED OVER TIME



Q1: VOTE FOR GOVERNOR / RESPONSES COMPARED BY PERCENTAGES AND BY INDEX

OVERALL
 DEMOCRAT
 REPUBLICAN
 INDEPENDENT
 CONSERVATIVE
 MODERATE
 LIBERAL

RESPONSES SORTED BY DEMOGRAPHIC CATEGORY

HODGES (D)
 SANFORD (R)
 UNDECIDED / OTHER

51%	85%	17%	48%	43%	53%	77%								
46%	13%	81%	46%	55%	45%	20%								
3%	2%	2%	6%	2%	3%	3%								
100%	100%	100%	100%	100%	100%	100%								

DEMOGRAPHIC SUBPOPULATIONS INDEXED TO OVERALL RESPONSES

HODGES (D)
 SANFORD (R)
 UNDECIDED / OTHER

100	168	34	95	84	104	152								
100	27	174	98	119	96	42								
100	73	64	215	74	100	109								

OVERALL
 DEMOCRAT
 REPUBLICAN
 INDEPENDENT
 CONSERVATIVE
 MODERATE
 LIBERAL

Q2: VOTE FOR SENATE / RESPONSES COMPARED BY PERCENTAGES AND BY INDEX

	OVERALL	DEMOCRAT	REPUBLICAN	INDEPENDENT	CONSERVATIVE	MODERATE	LIBERAL							
	RESPONSES SORTED BY DEMOGRAPHIC CATEGORY													
SANDERS (D)	44%	77%	13%	39%	36%	47%	67%							
GRAHAM (R)	53%	20%	85%	56%	62%	50%	32%							
UNDECIDED / OTHER	3%	3%	1%	5%	2%	3%	2%							
	100%	100%	100%	100%	100%	100%	100%							

	OVERALL	DEMOCRAT	REPUBLICAN	INDEPENDENT	CONSERVATIVE	MODERATE	LIBERAL							
	DEMOGRAPHIC SUBPOPULATIONS INDEXED TO OVERALL RESPONSES													
SANDERS (D)	100	176	30	90	82	107	151							
GRAHAM (R)	100	37	161	105	117	94	60							
UNDECIDED / OTHER	100	114	51	165	75	106	54							

OVERALL
 DEMOCRAT
 REPUBLICAN
 INDEPENDENT
 CONSERVATIVE
 MODERATE
 LIBERAL

The following is a material part of this report and should be included when data is referenced:

How this poll was conducted: This SurveyUSA poll was conducted by telephone in the voice of a professional announcer. All respondents heard the questions asked identically. Page 1 of this report contains: the geography that was surveyed; the dates interviews were conducted; the news organization that paid for the research; and the name of the random sample provider. The universe of respondents and the margin of error are stated on Page 2 of this report, and if restated on one or more subsequent pages, it is because the universe and margin of error changed for those subsequent questions. Where necessary, responses were weighted according to age, gender, ethnic origin, geographical area and number of adults and number of voice telephone lines in the household, so that the sample would reflect the actual demographic proportions in the population, using most recent U.S. Census estimates. In theory, with the stated sample size, one can say with 95% certainty that the results would not vary by more than the stated margin of error, in one direction or the other, had the entire universe of respondents been interviewed with complete accuracy. There are other possible sources of error in all surveys that may be more serious than theoretical calculations of sampling error. These include refusals to be interviewed, question wording and question order, weighting by demographic control data and the manner in which respondents are filtered (such as, determining who is a likely voter). It is difficult to quantify the errors that may result from these factors. Fieldwork for this survey was done by SurveyUSA of Verona, NJ. These statements conform to the principles of disclosure of the National Council of Public Polls.