

# KERRY 35 PTS ATOP EDWARDS IN CA; JONES LEADS IN GOP SENATE FIGHT

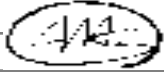
\* EXCLUSIVE SURVEYUSA RESEARCH RESULTS \*

YOU MUST CREDIT SURVEYUSA IF YOU AIR, CITE

OR REPRINT THESE RESULTS IN WHOLE OR PART

## 1 WEEK TO SUPER TUESDAY, LITTLE DRAMA REMAINS IN PRESIDENTIAL CONTEST

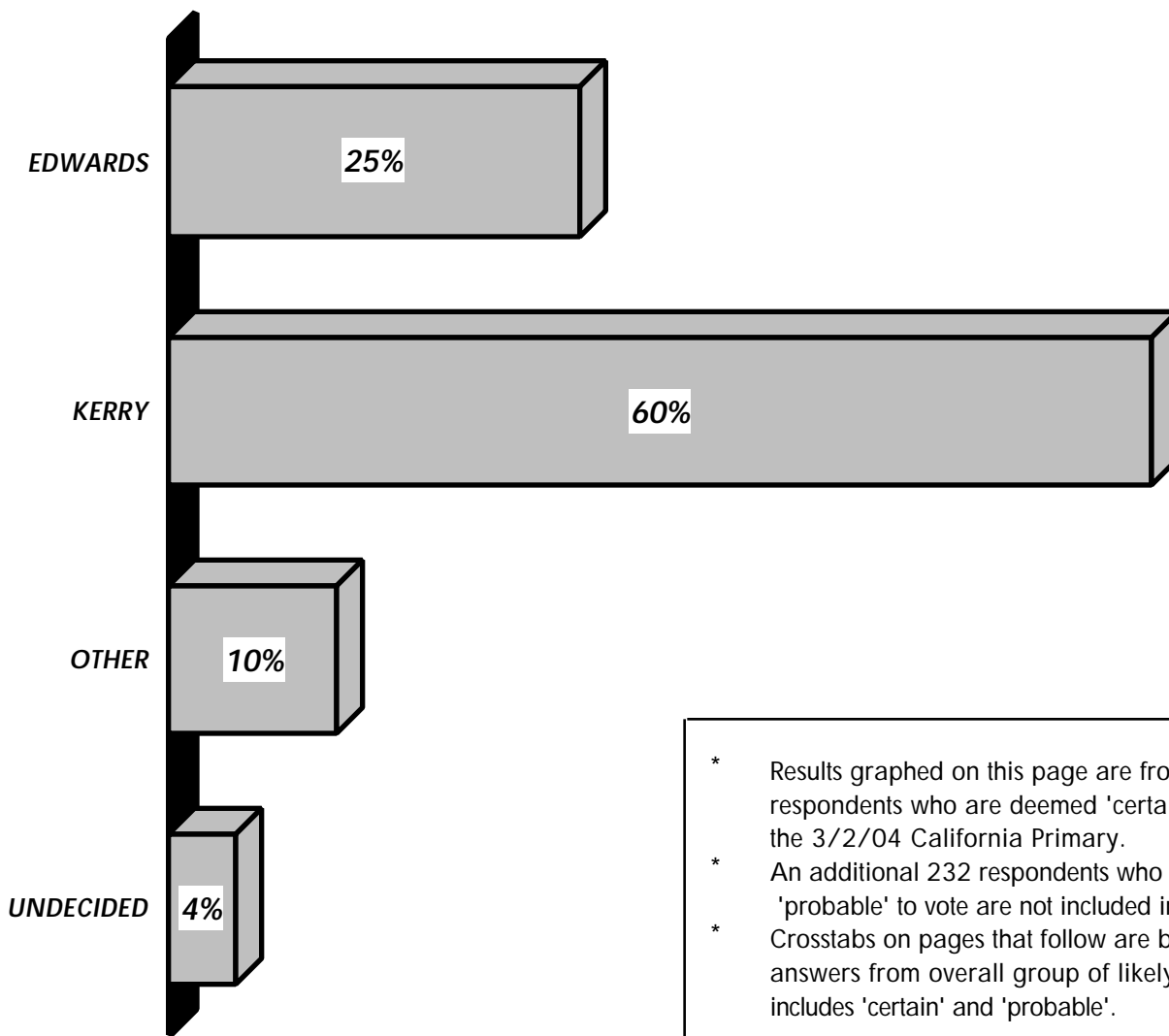
- \* IN A CALIFORNIA PRIMARY TODAY, 1 WEEK TO THE VOTE, JOHN KERRY DEFEATS JOHN EDWARDS FOR THE DEMOCRATIC PRESIDENTIAL NOMINATION & BILL JONES DEFEATS A LARGE FIELD FOR THE REPUBLICAN U. S. SENATE NOMINATION, ACCORDING TO SURVEYUSA POLL CONDUCTED 2/21 - 2/23.
- \* FOR PRESIDENT, IT'S KERRY 60%, EDWARDS 25%. COMPARED TO IDENTICAL POLL RELEASED 2/17, BEFORE RESULTS OF WISCONSIN WERE KNOWN, KERRY IS UP 1 PT, EDWARDS IS UP 11 PTS.
- \* FOR SENATOR, IT'S JONES 41%, TONI CASEY & HOWARD KALOOGIAN 9%, ROSARIO MARIN 8%.
- \* COMPARED TO POLL ON 2/17, JONES IS UP 5 PTS, COMPETITORS ARE FLAT OR DOWN SLIGHTLY.
- \* 32% OF GOP PRIMARY VOTERS CHOOSE "OTHER" OR "UNDECIDED" FOR SENATE, SO RACE IS FLUID.

<b>RESEARCH CONDUCTED E.T.</b>	040221 15:00-22:53 040222 17:00-22:33 040223 12:00-23:59 ET	<b>APPROVED</b>
<b>RESPONDENTS DRAWN FROM</b>	THE ENTIRE STATE OF CALIFORNIA	
<b>RANDOM SAMPLE SELECTED BY</b>	SURVEY SAMPLING, INC.	

RESEARCH CONDUCTED FOR KABC-TV LOS ANGELES, KPIX-TV SAN FRANCISCO, KXTV-TV SACRAMENTO & KGTV-TV SAN DIEGO

**PRESIDENTIAL VOTE / ALL CERTAIN VOTERS**

ON MARCH 2ND, CALIFORNIA WILL HOLD A PRIMARY ELECTION FOR PRESIDENT OF THE UNITED STATES AND FOR UNITED STATES SENATOR. IF THE DEMOCRATIC PRIMARY FOR PRESIDENT OF THE UNITED STATES WERE TODAY, AND YOU WERE STANDING IN THE VOTING BOOTH RIGHT NOW, WHO WOULD YOU VOTE FOR? JOHN EDWARDS? JOHN KERRY? OR SOME OTHER CANDIDATE?



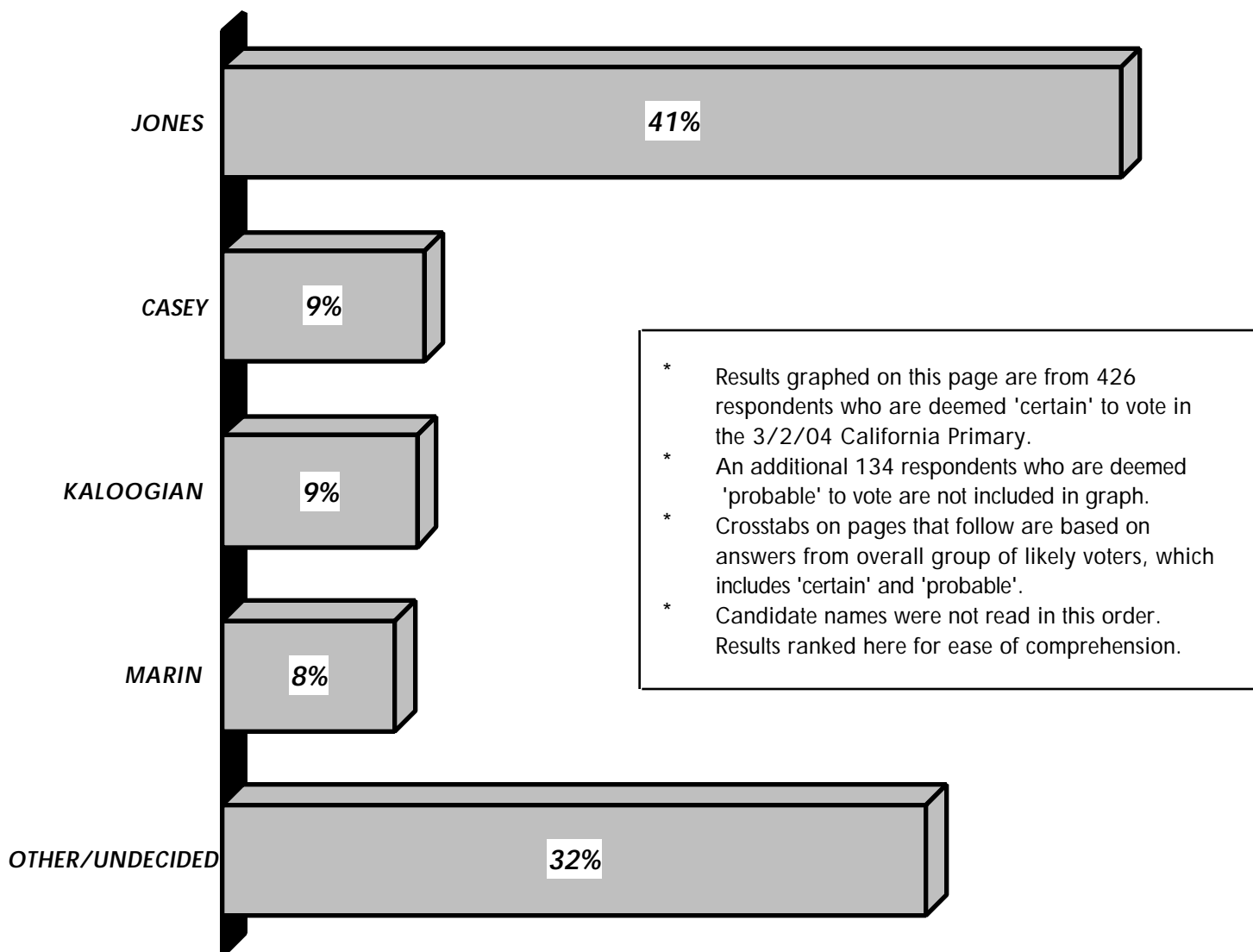
\* Results graphed on this page are from 558 respondents who are deemed 'certain' to vote in the 3/2/04 California Primary.  
 \* An additional 232 respondents who are deemed 'probable' to vote are not included in graph.  
 \* Crosstabs on pages that follow are based on answers from overall group of likely voters, which includes 'certain' and 'probable'.

THIS IS A SURVEY OF	558	CERTAIN VOTERS FROM THE ENTIRE STATE OF CALIFORNIA
OVERALL RESULTS CONSIDERED SIGNIFICANT	± 4.1%	A LARGER ± APPLIES TO SUBPOPULATIONS

RESULTS MAY NOT ADD TO 100%, BECAUSE PERCENTAGES ARE ROUNDED TO WHOLE NUMBERS

**GOP SENATE VOTE / ALL CERTAIN VOTERS**

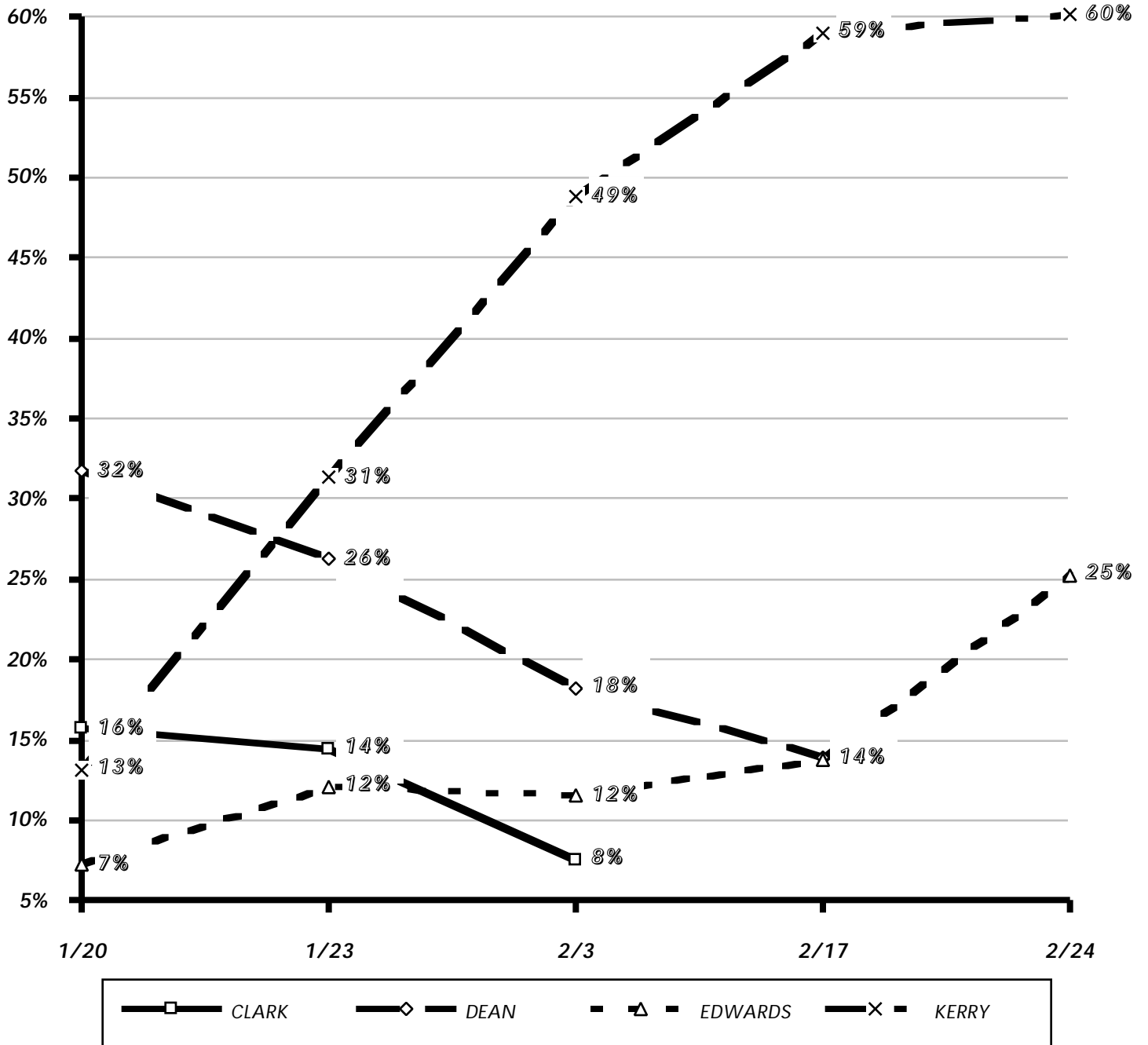
IF THE REPUBLICAN PRIMARY FOR UNITED STATES SENATOR WERE HELD TODAY, AND YOU WERE STANDING IN THE VOTING BOOTH RIGHT NOW, WHO WOULD YOU VOTE FOR? TONI CASEY? BILL JONES? HOWARD KALOOGIAN? ROSARIO MARIN? OR SOME OTHER CANDIDATE?



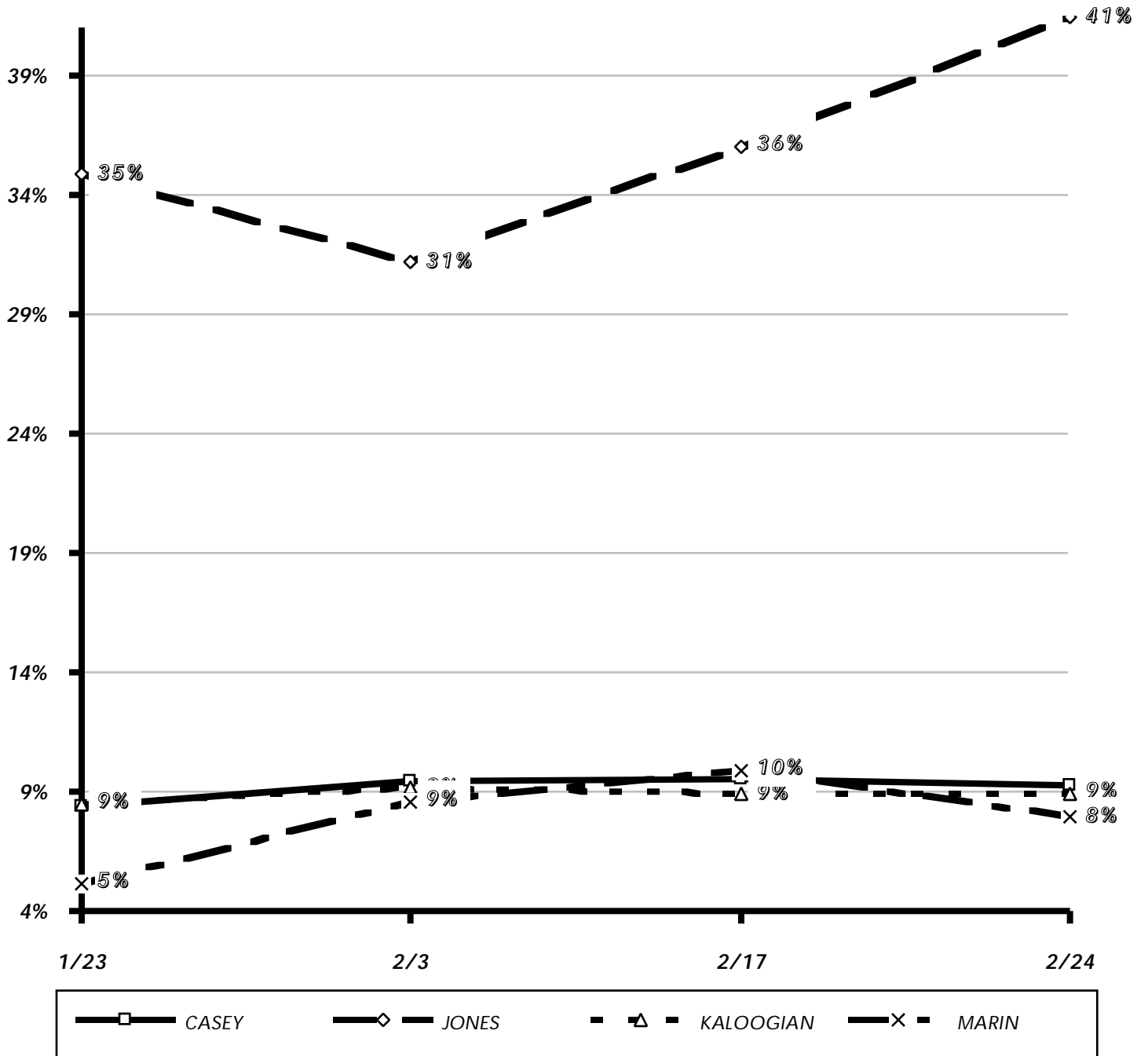
THIS IS A SURVEY OF	426	CERTAIN VOTERS FROM THE ENTIRE STATE OF CALIFORNIA
OVERALL RESULTS CONSIDERED SIGNIFICANT	±4.8%	A LARGER ± APPLIES TO SUBPOPULATIONS

RESULTS MAY NOT ADD TO 100%, BECAUSE PERCENTAGES ARE ROUNDED TO WHOLE NUMBERS

PRESIDENTIAL VOTE / ALL CERTAIN VOTERS



GOP SENATE VOTE / ALL CERTAIN VOTERS



PRESIDENTIAL VOTE / RESPONSES COMPARED BY PERCENTAGES AND BY INDEX

	CERTAIN	PROBABLE	OVERALL	MALE	FEMALE	18-34	35-54	55+	WHITE	BLACK	HISPANIC	ASIAN/OTHER			
<b>RESPONSES SORTED BY DEMOGRAPHIC CATEGORY</b>															
EDWARDS	25%	19%	23%	26%	21%	21%	25%	23%	27%	15%	19%	26%			
KERRY	60%	52%	58%	59%	56%	56%	55%	64%	59%	62%	59%	45%			
OTHER	10%	16%	12%	11%	13%	14%	12%	10%	10%	13%	11%	20%			
UNDECIDED	4%	13%	7%	4%	9%	9%	8%	4%	4%	9%	10%	8%			
	100%	100%	100%	100%	100%	100%	100%	100%	100%	100%	100%	100%			

	CERTAIN	PROBABLE	OVERALL	MALE	FEMALE	18-34	35-54	55+	WHITE	BLACK	HISPANIC	ASIAN/OTHER			
<b>DEMOGRAPHIC SUBPOPULATIONS INDEXED TO OVERALL RESPONSES</b>															
EDWARDS	108	81	100	112	89	91	108	97	115	65	82	112			
KERRY	104	90	100	102	98	97	95	111	102	108	103	78			
OTHER	87	132	100	89	110	116	101	81	87	109	94	169			
UNDECIDED	61	193	100	56	140	126	113	54	59	134	150	122			

PRESIDENTIAL VOTE / RESPONSES COMPARED BY PERCENTAGES AND BY INDEX

	OVERALL	CONSERVATIVE	MODERATE	LIBERAL	GRAD SCHOOL	COLLEGE GRAD	SOME COLLEGE	NO COLLEGE	INLAND EMPIRE	GREATER L. A.	CENTRAL VALLEY	BAY AREA/NORTHERN COAST			
<b>RESPONSES SORTED BY DEMOGRAPHIC CATEGORY</b>															
EDWARDS	23%	17%	26%	22%	26%	27%	18%	26%	28%	22%	20%	26%			
KERRY	58%	58%	56%	60%	58%	53%	61%	55%	54%	60%	66%	51%			
OTHER	12%	17%	10%	14%	12%	12%	14%	9%	13%	11%	9%	15%			
UNDECI DED	7%	8%	7%	5%	5%	9%	6%	10%	5%	8%	5%	8%			
	100%	100%	100%	100%	100%	100%	100%	100%	100%	100%	100%	100%			

	OVERALL	CONSERVATIVE	MODERATE	LIBERAL	GRAD SCHOOL	COLLEGE GRAD	SOME COLLEGE	NO COLLEGE	INLAND EMPIRE	GREATER L. A.	CENTRAL VALLEY	BAY AREA/NORTHERN COAST			
<b>DEMOGRAPHIC SUBPOPULATIONS INDEXED TO OVERALL RESPONSES</b>															
EDWARDS	100	71	113	93	109	113	79	109	119	92	85	111			
KERRY	100	101	98	104	101	92	106	96	93	104	115	89			
OTHER	100	143	86	115	96	98	115	75	108	91	75	123			
UNDECI DED	100	114	101	67	68	126	94	150	80	111	68	113			

GOP SENATE VOTE / RESPONSES COMPARED BY PERCENTAGES AND BY INDEX

	CERTAIN	PROBABLE	OVERALL	MALE	FEMALE	18-34	35-54	55+	WHITE	BLACK	HISPANIC	ASIAN/OTHER			
<b>RESPONSES SORTED BY DEMOGRAPHIC CATEGORY</b>															
CASEY	9%	13%	10%	9%	12%	13%	9%	10%	12%	1%	7%	8%			
JONES	41%	24%	37%	46%	28%	31%	39%	39%	39%	27%	30%	37%			
KALOOGIAN	9%	6%	8%	9%	8%	8%	7%	10%	8%	7%	11%	9%			
MARIN	8%	7%	8%	9%	6%	8%	9%	7%	7%	20%	13%	4%			
OTHER	21%	33%	24%	19%	29%	27%	21%	26%	22%	33%	28%	29%			
UNDECI DED	11%	16%	12%	8%	17%	13%	15%	9%	13%	11%	12%	12%			
	100%	100%	100%	100%	100%	100%	100%	100%	100%	100%	100%	100%			

	CERTAIN	PROBABLE	OVERALL	MALE	FEMALE	18-34	35-54	55+	WHITE	BLACK	HISPANIC	ASIAN/OTHER			
<b>DEMOGRAPHIC SUBPOPULATIONS INDEXED TO OVERALL RESPONSES</b>															
CASEY	90	131	100	86	115	125	86	99	116	14	67	79			
JONES	112	63	100	123	76	84	106	104	106	74	81	99			
KALOOGIAN	108	73	100	108	91	96	90	118	92	81	127	108			
MARIN	101	95	100	119	80	105	109	84	86	257	168	55			
UNDECI DED	88	139	100	80	121	111	88	108	91	139	115	121			
OTHER	91	129	100	64	137	104	119	71	101	88	96	101			

CERTAIN  
PROBABLE  
OVERALL  
MALE  
FEMALE  
18-34  
35-54  
55+  
WHITE  
BLACK  
HISPANIC  
ASIAN/OTHER

GOP SENATE VOTE / RESPONSES COMPARED BY PERCENTAGES AND BY INDEX

OVERALL  
 CONSERVATIVE  
 MODERATE  
 LIBERAL  
 GRAD SCHOOL  
 COLLEGE GRAD  
 SOME COLLEGE  
 NO COLLEGE  
 INLAND EMPIRE  
 GREATER L. A.  
 CENTRAL VALLEY  
 BAY AREA/NORTHERN COAST

<b>RESPONSES SORTED BY DEMOGRAPHIC CATEGORY</b>														
CASEY	10%	10%	10%	18%	10%	8%	10%	15%	11%	10%	11%	10%		
JONES	37%	40%	33%	32%	41%	37%	37%	31%	45%	31%	35%	39%		
KALOOGIAN	8%	10%	6%	2%	10%	10%	7%	6%	6%	7%	12%	11%		
MARIN	8%	7%	9%	9%	8%	10%	7%	6%	8%	10%	7%	5%		
OTHER	24%	20%	30%	33%	22%	23%	24%	30%	21%	28%	23%	21%		
UNDECI DED	12%	13%	12%	7%	9%	12%	15%	12%	9%	14%	12%	13%		
	100%	100%	100%	100%	100%	100%	100%	100%	100%	100%	100%	100%		

<b>DEMOGRAPHIC SUBPOPULATIONS INDEXED TO OVERALL RESPONSES</b>														
CASEY	100	98	93	173	95	77	100	149	105	96	104	98		
JONES	100	107	90	85	110	100	99	83	122	84	95	106		
KALOOGIAN	100	119	79	25	122	120	83	70	68	81	145	139		
MARIN	100	94	113	114	102	128	89	77	99	122	94	61		
OTHER	100	83	124	136	93	95	100	125	89	118	93	88		
UNDECI DED	100	104	96	56	72	99	121	98	75	115	100	107		

OVERALL  
 CONSERVATIVE  
 MODERATE  
 LIBERAL  
 GRAD SCHOOL  
 COLLEGE GRAD  
 SOME COLLEGE  
 NO COLLEGE  
 INLAND EMPIRE  
 GREATER L. A.  
 CENTRAL VALLEY  
 BAY AREA/NORTHERN COAST

RAW COUNTS FOR ALL RESPONSE CHOICES

THE RESPONSES OF A SUBPOPULATION OF 100 WOULD TYPICALLY BE CONSIDERED ACCURATE + 10%  
 PLEASE EXERCISE EXTREME CAUTION IN DRAWING CONCLUSIONS FROM SUBPOPULATIONS SMALLER THAN 100

	OVERALL	MALE	FEMALE	18-34	35-54	55+	WHITE	BLACK	HISPANIC	ASIAN/OTHER	INLAND EMPLOYEE	GREATER L. A.	CENTRAL VALLEY	BAY AREA/NORTHERN COAST
REGISTERED	1669	805	863	487	714	468	919	107	429	214	323	657	302	387
DEMOCRATIC	790	375	415	233	333	224	392	076	234	087	113	322	131	225
REPUBLICAN	561	288	273	137	246	178	375	012	100	074	151	203	111	096
CERTAIN	1061	543	518	238	475	348	633	060	254	113	216	416	185	243
PROBABLE	444	181	262	182	175	087	212	036	122	073	075	174	090	105
EDWARDS	185	099	087	050	085	051	105	012	045	023	031	069	026	059
KERRY	456	222	234	131	182	143	230	048	139	039	061	194	087	115
OTHER	095	040	055	033	041	022	041	010	026	018	015	035	012	033
UNDECIDED	054	014	039	020	025	008	016	007	024	007	006	024	006	017
CASEY	058	025	032	018	022	018	045	000	007	006	016	020	012	010
JONES	208	132	077	043	097	069	148	003	030	027	068	063	039	037
KALOOGIAN	046	026	021	011	018	017	028	001	011	007	009	014	013	011
MARIN	044	027	017	011	021	012	025	002	013	003	012	019	008	005
OTHER	135	055	080	037	052	046	082	004	028	022	032	058	025	020
UNDECIDED	069	023	046	018	036	016	047	001	012	009	014	029	014	013
TOTAL	2000	976	1024	689	807	504	1041	119	554	286	393	799	365	443
COMPOSITION OF ADULTS	100%	49%	51%	34%	40%	25%	52%	6%	28%	14%	20%	40%	18%	22%
COMP. OF REGISTERED	100%	48%	52%	29%	43%	28%	55%	6%	26%	13%	19%	39%	18%	23%
COMP. OF DEMOCRATIC VOTERS	100%	47%	53%	30%	42%	28%	50%	10%	30%	11%	14%	41%	17%	28%
COMP. REPUBLICAN VOTERS	100%	51%	49%	24%	44%	32%	67%	2%	18%	13%	27%	36%	20%	17%
COMP. LIKELY VOTERS	100%	48%	52%	28%	43%	29%	56%	6%	25%	12%	19%	39%	18%	23%
COMP. CERTAIN VOTERS	100%	51%	49%	22%	45%	33%	60%	6%	24%	11%	20%	39%	17%	23%

**2000 CALIFORNIA ADULTS INTERVIEWED STATEWIDE 2/21 - 2/23.  
 OF THEM, 1669 WERE REGISTERED TO VOTE.  
 OF THEM, 1504 WERE JUDGED TO BE 'LIKELY' VOTERS.  
 790 CHOSE A DEMOCRATIC BALLOT. 561 CHOSE A REPUBLICAN BALLOT.  
 558 DEMOCRATS WERE JUDGED TO BE 'CERTAIN' VOTERS FOR PRESIDENT.  
 426 REPUBLICANS WERE JUDGED TO BE 'CERTAIN' VOTERS FOR SENATE.  
 GRAPHS REFLECT 'CERTAIN' VOTERS.**

RAW COUNTS FOR ALL RESPONSE CHOICES

THE RESPONSES OF A SUBPOPULATION OF 100 WOULD TYPICALLY BE CONSIDERED ACCURATE ± 10%  
PLEASE EXERCISE EXTREME CAUTION IN DRAWING CONCLUSIONS FROM SUBPOPULATIONS SMALLER THAN 100

	OVERALL	CERTAIN	PROBABLE	CONSERVATIVE	MODERATE	LIBERAL	NOT SURE	GRAD SCHOOL	COLLEGE GRAD	SOME COLLEGE	NO COLLEGE				
REGISTERED	1669	1061	444	506	751	375	037	497	351	592	229				
DEMOCRATIC	790	558	232	072	411	289	018	254	176	258	102				
REPUBLICAN	561	426	134	344	181	030	006	150	125	214	071				
CERTAIN	1061	1061	000	343	457	245	016	336	236	369	121				
PROBABLE	444	000	444	104	223	099	017	109	088	170	077				
EDWARDS	185	141	044	012	109	063	002	065	047	048	026				
KERRY	456	336	121	042	232	173	009	148	094	159	056				
OTHER	095	058	037	012	042	040	000	029	021	036	009				
UNDECIDED	054	023	030	006	028	013	007	012	015	016	010				
CASEY	058	039	018	035	017	005	000	015	010	022	011				
JONES	208	177	032	137	061	010	001	061	046	079	022				
KALOOGIAN	046	038	008	034	012	001	000	015	012	015	004				
MARIN	044	034	010	025	016	003	000	012	013	015	004				
OTHER	135	090	045	069	054	010	003	034	029	051	021				
UNDECIDED	069	048	021	044	021	002	002	013	015	032	009				
TOTAL	2000	1061	444	506	751	375	037	568	409	696	327				
COMPOSITION OF ADULTS	100%	53%	22%	25%	38%	19%	2%	28%	20%	35%	16%				
COMP. OF REGISTERED	100%	64%	27%	30%	45%	22%	2%	30%	21%	35%	14%				
COMP. OF DEMOCRATIC VOTERS	100%	71%	29%	9%	52%	37%	2%	32%	22%	33%	13%				
COMP. REPUBLICAN VOTERS	100%	76%	24%	61%	32%	5%	1%	27%	22%	38%	13%				
COMP. LIKELY VOTERS	100%	71%	29%	30%	45%	23%	2%	30%	22%	36%	13%				
COMP. CERTAIN VOTERS	100%	100%	0%	32%	43%	23%	1%	32%	22%	35%	11%				

**2000 CALIFORNIA ADULTS INTERVIEWED STATEWIDE 2/21 - 2/23.  
OF THEM, 1669 WERE REGISTERED TO VOTE.  
OF THEM, 1504 WERE JUDGED TO BE 'LIKELY' VOTERS.  
790 CHOSE A DEMOCRATIC BALLOT. 561 CHOSE A REPUBLICAN BALLOT.  
558 DEMOCRATS WERE JUDGED TO BE 'CERTAIN' VOTERS FOR PRESIDENT.  
426 REPUBLICANS WERE JUDGED TO BE 'CERTAIN' VOTERS FOR SENATE.  
GRAPHS REFLECT 'CERTAIN' VOTERS.**

The following is a material part of this report and should be included when data is referenced:

How this poll was conducted: This SurveyUSA poll was conducted by telephone in the voice of a professional announcer. All respondents heard the questions asked identically. Page 1 of this report contains: the geography that was surveyed; the dates interviews were conducted; the news organization that paid for the research; and the name of the random sample provider. The universe of respondents and the margin of error are stated on Page 2 of this report, and if restated on one or more subsequent pages, it is because the universe and margin of error changed for those subsequent questions. Where necessary, responses were weighted according to age, gender, ethnic origin, geographical area and number of adults and number of voice telephone lines in the household, so that the sample would reflect the actual demographic proportions in the population, using most recent U.S. Census estimates. In theory, with the stated sample size, one can say with 95% certainty that the results would not vary by more than the stated margin of error, in one direction or the other, had the entire universe of respondents been interviewed with complete accuracy. There are other possible sources of error in all surveys that may be more serious than theoretical calculations of sampling error. These include refusals to be interviewed, question wording and question order, weighting by demographic control data and the manner in which respondents are filtered (such as, determining who is a likely voter). It is difficult to quantify the errors that may result from these factors. Fieldwork for this survey was done by SurveyUSA of Verona, NJ. These statements conform to the principles of disclosure of the National Council on Public Polls.