

DEMOCRATS KERRY AND OBAMA COAST TO EASY WINS IN ILLINOIS



CERTAIN DEMOCRAT TAKE-AWAY FOR RETIRING REPUBLICAN FITZGERALD'S SENATE SEAT

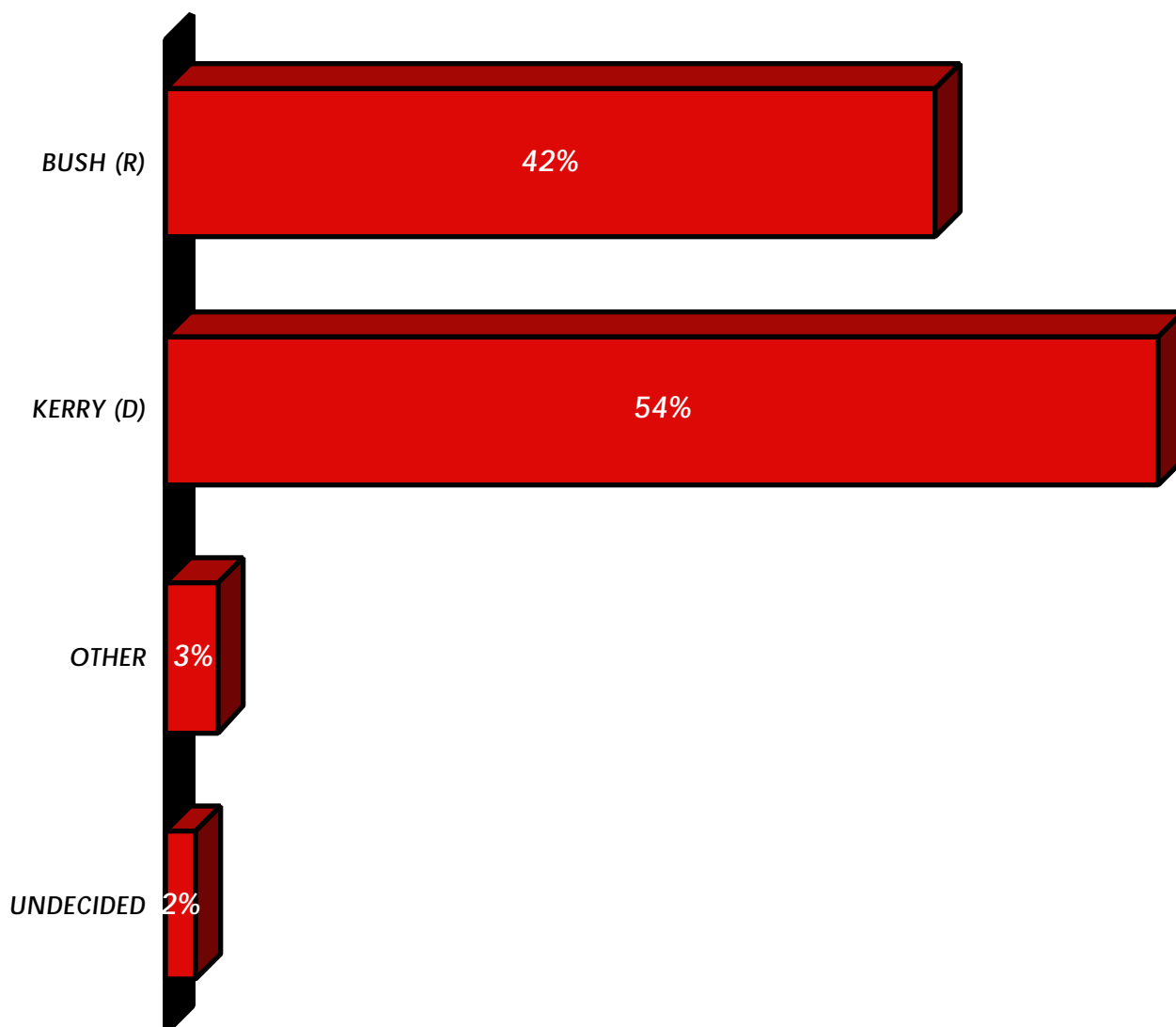
- ☛ IN AN ELECTION TODAY IN ILLINOIS, JOHN KERRY DEFEATS GEORGE W BUSH 54% TO 42% & DEMOCRAT BARACK OBAMA DEFEATS REPUBLICAN ALAN KEYES FOR U. S. SENATE 66% TO 27%, ACCORDING TO SURVEYUSA POLL OF 665 LIKELY VOTERS CONDUCTED 10/27 - 10/29.
- ☛ 72 HRS TILL POLLS OPEN, KERRY IS UP BY 12 PTS. GORE WON THE STATE BY 12 PTS IN 2000.
- ☛ KERRY LEADS BY 2 PTS AMONG MEN, BUT BY 21 PTS AMONG WOMEN. BUSH LEADS BY 4 AMONG WHITES, KERRY LEADS 6: 1 AMONG BLACKS. BUSH HOLDS 92% OF GOP BASE. KERRY HOLDS 91% OF DEMOCRAT BASE. INDEPENDENTS BREAK 48% TO 43% FOR KERRY. KERRY WINS THE CITY OF CHICAGO BY 59 PTS & SUBURBAN COOK BY 18 PTS. BUSH WINS COLLAR COUNTIES BY 24 PTS & EDGES KERRY DOWNSTATE BY 1 PT. STATEWIDE, SUBURBAN IL GOES 49% TO 47% FOR BUSH.

RESEARCH CONDUCTED E.T.	041027 16: 39- 21: 49 041028 16: 36- 21: 50 041029 16: 33- 21: 49 ET
RESPONDENTS DRAWN FROM	THE ENTIRE STATE OF ILLINOIS
RANDOM SAMPLE SELECTED BY	SURVEY SAMPLING INC.

RESEARCH CONDUCTED FOR WBBM-TV CHICAGO AND KSDK-TV ST. LOUIS

VOTE FOR PRESIDENT / ALL LIKELY VOTERS

ON TUESDAY, AMERICANS WILL ELECT A PRESIDENT. IF THE ELECTION FOR PRESIDENT OF THE UNITED STATES WERE TODAY, AND YOU WERE STANDING IN THE VOTING BOOTH RIGHT NOW, WHO WOULD YOU VOTE FOR? REPUBLICAN GEORGE W. BUSH? DEMOCRAT JOHN KERRY? OR SOME OTHER CANDIDATE?

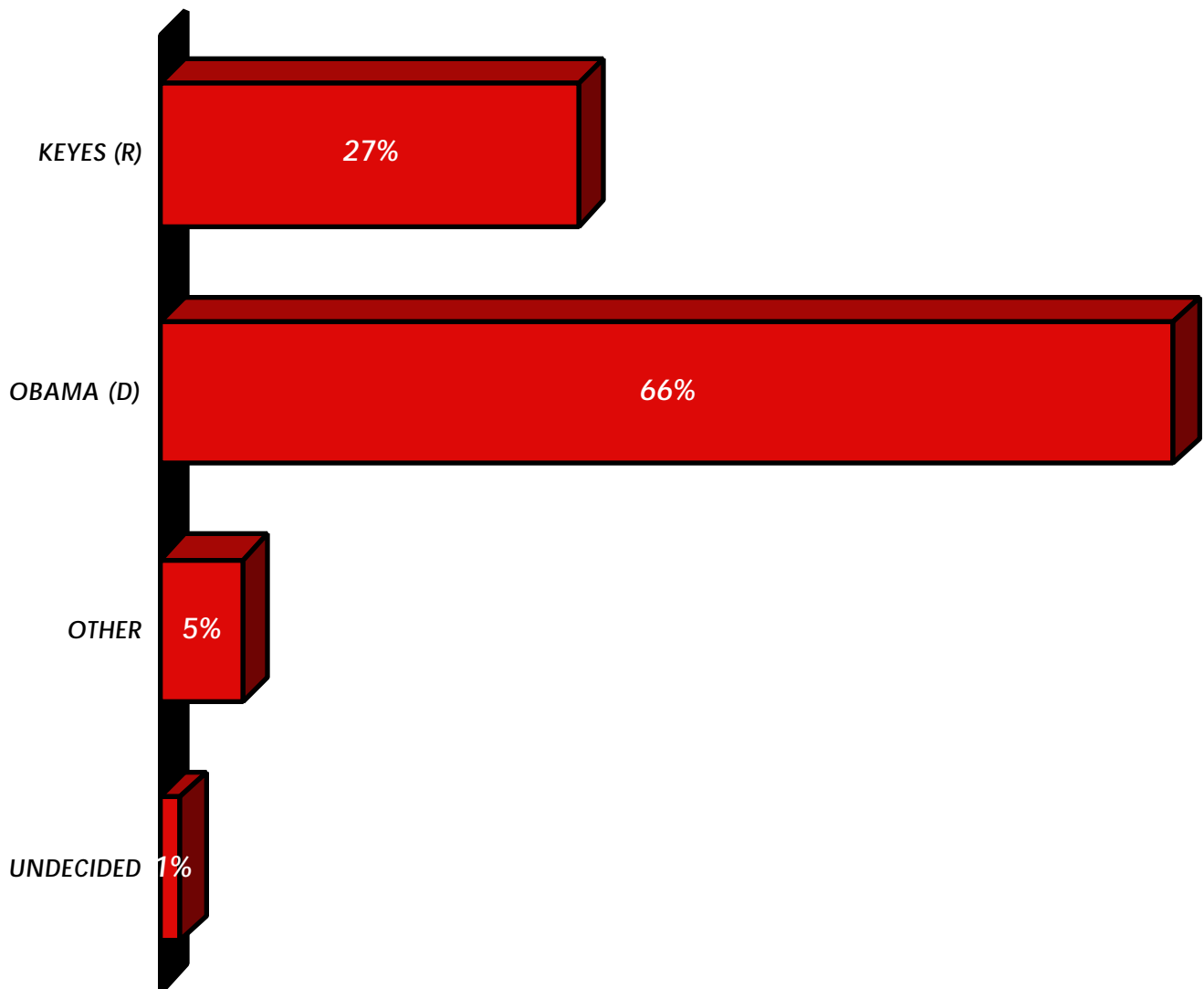


THIS IS A SURVEY OF	665	LIKELY VOTERS FROM THE ENTIRE STATE OF ILLINOIS
OVERALL RESULTS CONSIDERED SIGNIFICANT	$\pm 3.9\%$	A LARGER \pm APPLIES TO SUBPOPULATIONS

RESULTS MAY NOT ADD TO 100%, BECAUSE PERCENTAGES ARE ROUNDED TO WHOLE NUMBERS

VOTE FOR SENATOR / ALL LIKELY VOTERS

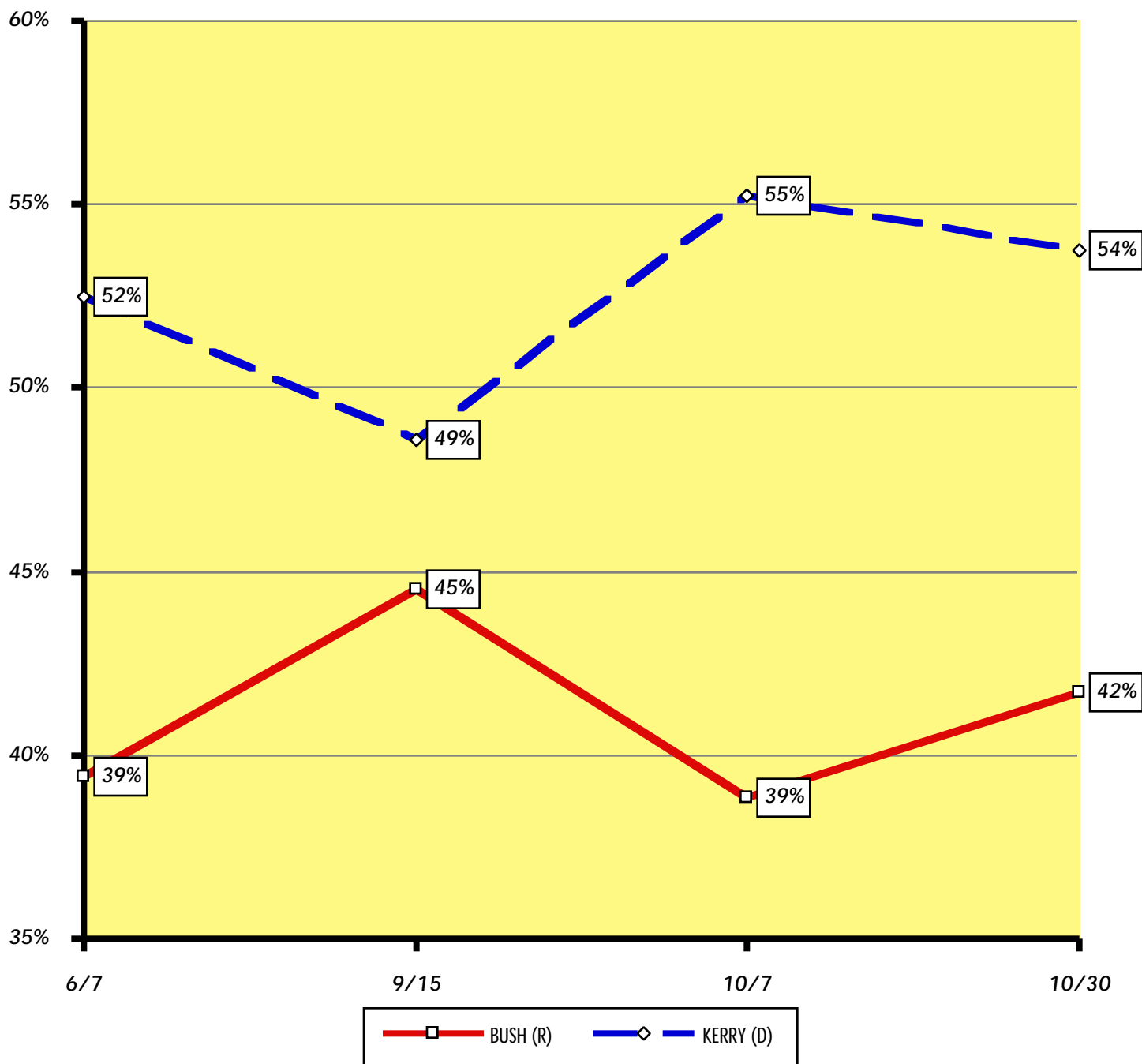
ILLINOIS VOTERS MAY ALSO VOTE IN AN ELECTION FOR UNITED STATES SENATOR. IF THE ELECTION FOR U. S. SENATOR FROM ILLINOIS WERE TODAY, AND YOU WERE STANDING IN THE VOTING BOOTH RIGHT NOW, WHO WOULD YOU VOTE FOR? REPUBLICAN ALAN KEYES? DEMOCRAT BARACK OBAMA? OR SOME OTHER CANDIDATE?



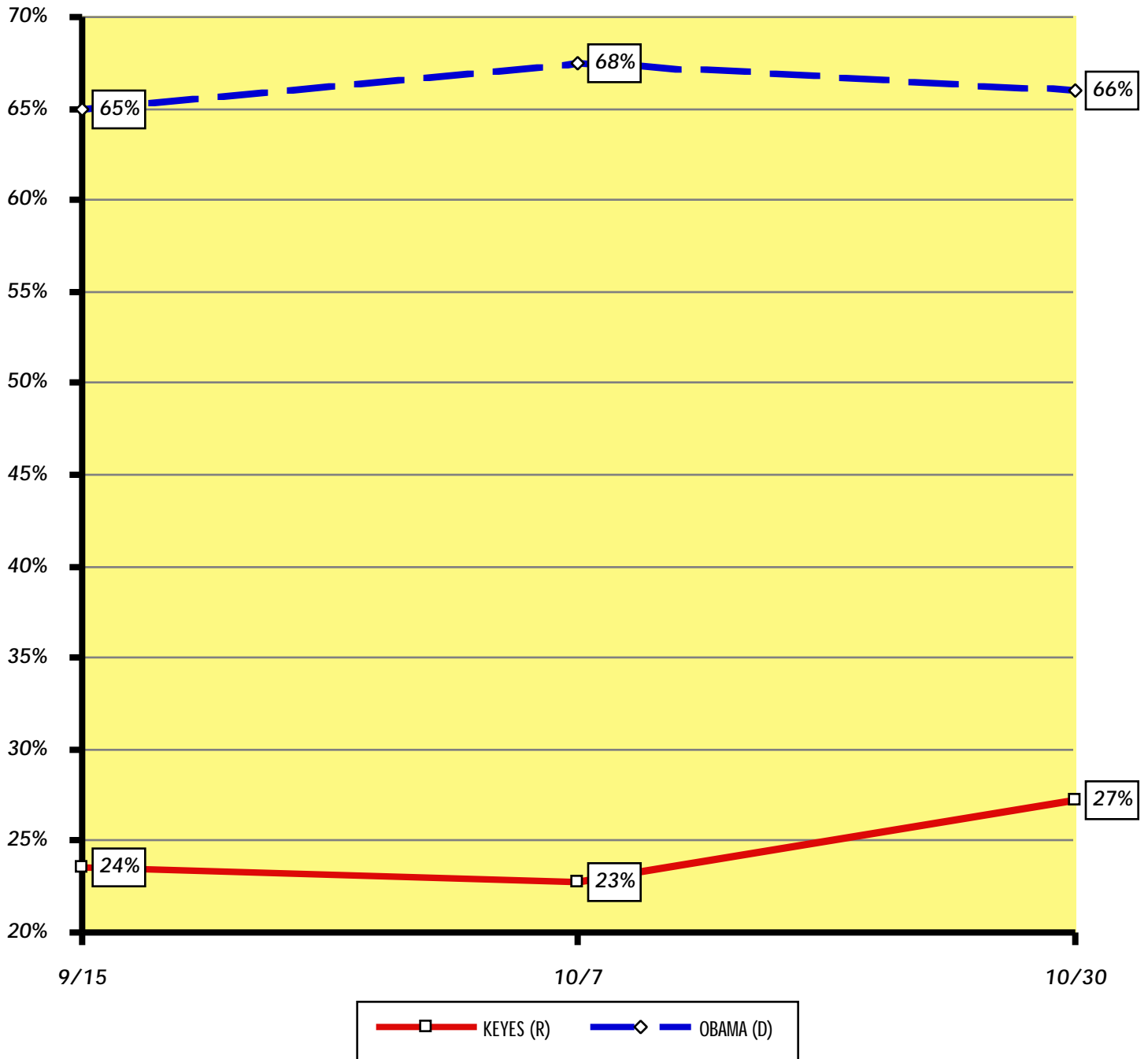
THIS IS A SURVEY OF	655	LIKELY VOTERS FROM THE ENTIRE STATE OF ILLINOIS
OVERALL RESULTS CONSIDERED SIGNIFICANT	$\pm 3.9\%$	A LARGER \pm APPLIES TO SUBPOPULATIONS

RESULTS MAY NOT ADD TO 100%, BECAUSE PERCENTAGES ARE ROUNDED TO WHOLE NUMBERS

VOTE FOR PRESIDENT / ALL LIKELY VOTERS



VOTE FOR SENATOR / ALL LIKELY VOTERS



VOTE FOR PRESIDENT / RESPONSES COMPARED BY PERCENTAGES AND BY INDEX

OVERALL CERTAIN PROBABLE MALE FEMALE AGE 18-34 AGE 35-49 AGE 50-64 AGE 65+ WHITE BLACK HISPANIC ASIAN/OTHER BUSH (R) KERRY (D)

RESPONSES SORTED BY DEMOGRAPHIC CATEGORY

BUSH (R)	42%	41%	50%	46%	38%	35%	44%	49%	37%	50%	14%	19%	34%		
KERRY (D)	54%	54%	45%	48%	59%	60%	51%	47%	57%	46%	84%	74%	56%		
OTHER	3%	3%	2%	5%	1%	4%	3%	1%	3%	3%	0%	8%	5%		
UNDECIDED	2%	2%	3%	1%	2%	1%	1%	2%	3%	2%	2%	0%	4%		
VOTED 'FOR' CANDIDATE															78%
'AGAINST' OTHER CAND.															20%
															51%
															46%
	100%	100%	100%	100%	100%	100%	100%	100%	100%	100%	100%	100%	100%		

DEMOGRAPHIC SUBPOPULATIONS INDEXED TO OVERALL RESPONSES

BUSH (R)	100	99	119	110	91	84	106	118	88	119	34	45	83		
KERRY (D)	100	101	84	89	110	111	96	88	107	85	155	137	104		
OTHER	100	102	67	182	28	130	112	49	103	94	0	269	192		
UNDECIDED	100	94	190	64	132	81	66	115	172	99	128	0	262		

OVERALL CERTAIN PROBABLE MALE FEMALE AGE 18-34 AGE 35-49 AGE 50-64 AGE 65+ WHITE BLACK HISPANIC ASIAN/OTHER

VOTE FOR PRESIDENT / RESPONSES COMPARED BY PERCENTAGES AND BY INDEX

	OVERALL	REPUBLICAN	DEMOCRAT	INDEPENDENT/OTHER	GRAD SCHOOL	COLLEGE GRAD	SOME COLLEGE	NO COLLEGE	CONSERVATIVE	MODERATE	LIBERAL	MILITARY/VET	NON-MILITARY/VET		
RESPONSES SORTED BY DEMOGRAPHIC CATEGORY															
BUSH (R)	42%	92%	8%	43%	42%	40%	43%	43%	72%	37%	7%	44%	40%		
KERRY (D)	54%	7%	91%	48%	52%	56%	54%	52%	22%	58%	93%	52%	56%		
OTHER	3%	1%	1%	7%	5%	3%	2%	3%	5%	3%	0%	4%	2%		
UNDECIDED	2%	1%	1%	2%	1%	1%	1%	3%	1%	2%	0%	1%	2%		
	100%	100%	100%	100%	100%	100%	100%	100%	100%	100%	100%	100%	100%		

	OVERALL	REPUBLICAN	DEMOCRAT	INDEPENDENT/OTHER	GRAD SCHOOL	COLLEGE GRAD	SOME COLLEGE	NO COLLEGE	CONSERVATIVE	MODERATE	LIBERAL	MILITARY/VET	NON-MILITARY/VET		
DEMOGRAPHIC SUBPOPULATIONS INDEXED TO OVERALL RESPONSES															
BUSH (R)	100	220	18	103	100	96	102	102	173	89	16	104	96		
KERRY (D)	100	12	168	90	97	104	101	96	41	108	172	96	104		
OTHER	100	29	31	250	166	96	66	92	164	104	0	129	68		
UNDECIDED	100	39	63	92	77	70	69	177	71	127	26	65	133		

OVERALL
 REPUBLICAN
 DEMOCRAT
 INDEPENDENT/OTHER
 GRAD SCHOOL
 COLLEGE GRAD
 SOME COLLEGE
 NO COLLEGE
 CONSERVATIVE
 MODERATE
 LIBERAL
 MILITARY/VET
 NON-MILITARY/VET

VOTE FOR PRESIDENT / RESPONSES COMPARED BY PERCENTAGES AND BY INDEX

OVERALL
 NO RELIGIOUS SERVICES
 OCCASIONAL RELIGIOUS SERVICES
 REGULAR RELIGIOUS SERVICES
 PRO-LIFE
 PRO-CHOICE
 UNION
 NON-UNION
 CHICAGO CITY
 SUBURBAN COOK
 COLLAR COUNTIES
 DOWNSTATE
 URBAN
 SUBURBAN
 RURAL

	RESPONSES SORTED BY DEMOGRAPHIC CATEGORY														
BUSH (R)	42%	37%	39%	47%	63%	28%	42%	43%	18%	38%	60%	49%	27%	49%	50%
KERRY (D)	54%	57%	57%	49%	33%	68%	49%	54%	77%	56%	36%	48%	69%	47%	44%
OTHER	3%	4%	2%	3%	3%	3%	7%	1%	4%	4%	2%	2%	3%	3%	4%
UNDECIDED	2%	2%	2%	1%	2%	1%	2%	1%	2%	3%	1%	1%	1%	2%	2%
	100%	100%	100%	100%	100%	100%	100%	100%	100%	100%	100%	100%	100%	100%	100%

	DEMOGRAPHIC SUBPOPULATIONS INDEXED TO OVERALL RESPONSES														
BUSH (R)	100	89	94	112	150	67	100	103	43	92	145	116	65	117	120
KERRY (D)	100	106	106	92	61	126	92	101	142	103	67	89	129	87	81
OTHER	100	145	75	97	90	116	243	53	133	125	79	77	93	92	148
UNDECIDED	100	112	95	90	121	52	135	79	101	153	65	87	72	108	137

OVERALL
 NO RELIGIOUS SERVICES
 OCCASIONAL RELIGIOUS SERVICES
 REGULAR RELIGIOUS SERVICES
 PRO-LIFE
 PRO-CHOICE
 UNION
 NON-UNION
 CHICAGO CITY
 SUBURBAN COOK
 COLLAR COUNTIES
 DOWNSTATE
 URBAN
 SUBURBAN
 RURAL

VOTE FOR SENATOR / RESPONSES COMPARED BY PERCENTAGES AND BY INDEX

	OVERALL	CERTAIN	PROBABLE	MALE	FEMALE	AGE 18-34	AGE 35-49	AGE 50-64	AGE 65+	WHITE	BLACK	HISPANIC	ASIAN/OTHER		
	RESPONSES SORTED BY DEMOGRAPHIC CATEGORY														
KEYES (R)	27%	28%	12%	32%	23%	27%	31%	23%	26%	31%	13%	20%	26%		
OBAMA (D)	66%	65%	74%	60%	72%	67%	62%	70%	66%	61%	82%	78%	72%		
OTHER	5%	5%	5%	7%	4%	4%	6%	6%	6%	7%	2%	0%	0%		
UNDECIDED	1%	1%	9%	2%	1%	2%	1%	1%	3%	1%	3%	2%	1%		
	100%	100%	100%	100%	100%	100%	100%	100%	100%	100%	100%	100%	100%		

	OVERALL	CERTAIN	PROBABLE	MALE	FEMALE	AGE 18-34	AGE 35-49	AGE 50-64	AGE 65+	WHITE	BLACK	HISPANIC	ASIAN/OTHER		
	DEMOGRAPHIC SUBPOPULATIONS INDEXED TO OVERALL RESPONSES														
KEYES (R)	100	104	44	116	86	99	116	86	94	113	46	74	97		
OBAMA (D)	100	99	113	90	108	102	93	106	100	93	125	118	109		
OTHER	100	101	86	130	74	77	114	103	108	128	38	0	6		
UNDECIDED	100	65	644	116	86	113	56	82	183	75	213	136	101		

	OVERALL	CERTAIN	PROBABLE	MALE	FEMALE	AGE 18-34	AGE 35-49	AGE 50-64	AGE 65+	WHITE	BLACK	HISPANIC	ASIAN/OTHER
--	---------	---------	----------	------	--------	-----------	-----------	-----------	---------	-------	-------	----------	-------------

VOTE FOR SENATOR / RESPONSES COMPARED BY PERCENTAGES AND BY INDEX

	OVERALL	REPUBLICAN	DEMOCRAT	INDEPENDENT/OTHER	GRAD SCHOOL	COLLEGE GRAD	SOME COLLEGE	NO COLLEGE	CONSERVATIVE	MODERATE	LIBERAL	MILITARY/VET	NON-MILITARY/VET	BUSH (R)	KERRY (D)
RESPONSES SORTED BY DEMOGRAPHIC CATEGORY															
KEYES (R)	27%	60%	6%	28%	25%	28%	27%	30%	52%	21%	6%	32%	23%	56%	5%
OBAMA (D)	66%	33%	92%	61%	70%	65%	64%	64%	36%	73%	92%	62%	70%	33%	93%
OTHER	5%	7%	1%	9%	4%	6%	7%	4%	11%	4%	2%	5%	6%	10%	1%
UNDECIDED	1%	0%	1%	2%	1%	0%	2%	3%	1%	2%	0%	1%	2%	2%	0%
	100%	100%	100%	100%	100%	100%	100%	100%	100%	100%	100%	100%	100%	100%	100%

	OVERALL	REPUBLICAN	DEMOCRAT	INDEPENDENT/OTHER	GRAD SCHOOL	COLLEGE GRAD	SOME COLLEGE	NO COLLEGE	CONSERVATIVE	MODERATE	LIBERAL	MILITARY/VET	NON-MILITARY/VET	BUSH (R)	KERRY (D)
DEMOGRAPHIC SUBPOPULATIONS INDEXED TO OVERALL RESPONSES															
KEYES (R)	100	219	22	102	91	104	98	110	191	78	22	116	83	205	18
OBAMA (D)	100	50	140	92	106	99	98	97	55	111	139	94	106	50	142
OTHER	100	136	24	170	77	113	131	67	205	69	35	96	108	179	24
UNDECIDED	100	15	38	162	78	0	129	197	67	135	31	80	127	111	28

OVERALL	REPUBLICAN	DEMOCRAT	INDEPENDENT/OTHER	GRAD SCHOOL	COLLEGE GRAD	SOME COLLEGE	NO COLLEGE	CONSERVATIVE	MODERATE	LIBERAL	MILITARY/VET	NON-MILITARY/VET	BUSH (R)	KERRY (D)
---------	------------	----------	-------------------	-------------	--------------	--------------	------------	--------------	----------	---------	--------------	------------------	----------	-----------

VOTE FOR SENATOR / RESPONSES COMPARED BY PERCENTAGES AND BY INDEX

OVERALL
 NO RELIGIOUS SERVICES
 OCCASIONAL RELIGIOUS SERVICES
 REGULAR RELIGIOUS SERVICES
 PRO-LIFE
 PRO-CHOICE
 UNION
 NON-UNION
 CHICAGO CITY
 SUBURBAN COOK
 COLLAR COUNTIES
 DOWNSTATE
 URBAN
 SUBURBAN
 RURAL

	RESPONSES SORTED BY DEMOGRAPHIC CATEGORY														
KEYES (R)	27%	28%	23%	31%	44%	17%	30%	27%	17%	21%	35%	33%	20%	30%	35%
OBAMA (D)	66%	65%	71%	62%	47%	79%	60%	67%	78%	72%	56%	60%	76%	62%	57%
OTHER	5%	6%	6%	5%	7%	4%	9%	4%	2%	6%	9%	5%	3%	7%	5%
UNDECIDED	1%	2%	1%	2%	2%	0%	1%	1%	3%	0%	0%	2%	2%	1%	3%
	100%	100%	100%	100%	100%	100%	100%	100%	100%	100%	100%	100%	100%	100%	100%

	DEMOGRAPHIC SUBPOPULATIONS INDEXED TO OVERALL RESPONSES														
KEYES (R)	100	103	84	114	162	61	108	101	64	77	129	120	73	110	128
OBAMA (D)	100	98	107	94	71	119	91	101	118	110	84	91	115	94	87
OTHER	100	106	103	95	136	79	165	77	34	118	172	96	50	134	91
UNDECIDED	100	112	86	110	137	30	104	106	182	18	0	143	123	51	226

OVERALL
 NO RELIGIOUS SERVICES
 OCCASIONAL RELIGIOUS SERVICES
 REGULAR RELIGIOUS SERVICES
 PRO-LIFE
 PRO-CHOICE
 UNION
 NON-UNION
 CHICAGO CITY
 SUBURBAN COOK
 COLLAR COUNTIES
 DOWNSTATE
 URBAN
 SUBURBAN
 RURAL

RAW COUNTS FOR ALL RESPONSE CHOICES

THE RESPONSES OF A SUBPOPULATION OF 100 WOULD TYPICALLY BE CONSIDERED ACCURATE ± 10%.
PLEASE EXERCISE EXTREME CAUTION IN DRAWING CONCLUSIONS FROM SUBPOPULATIONS SMALLER THAN 100

	OVERALL	REPUBLICAN	DEMOCRAT	INDEPENDENT/OTHER	GRAD SCHOOL	COLLEGE GRAD	SOME COLLEGE	NO COLLEGE	CONSERVATIVE	MODERATE	LIBERAL	MILITARY/VET	NON-MILITARY/VET	BUSH (R)	KERRY (D)
REGISTERED	728	192	289	233	160	174	224	165	222	343	126	387	331		
CERTAIN	623	165	252	195	136	158	190	134	188	296	110	339	277		
PROBABLE	042	011	011	018	005	006	015	015	008	023	006	022	019		
LIKELY	665	176	263	213	141	165	205	149	197	319	116	360	296		
BUSH (R)	278	162	020	092	059	066	088	064	142	118	008	157	118		
KERRY (D)	358	012	238	103	073	092	111	077	043	185	108	186	166		
OTHER	019	001	002	015	007	004	004	004	009	009	000	013	006		
UNDECIDED	011	001	003	003	002	002	002	004	002	007	000	004	006		
KEYES (R)	178	103	016	058	034	046	054	044	101	066	007	112	066	151	017
OBAMA (D)	432	057	242	127	098	107	130	093	070	230	107	221	204	088	333
OTHER	035	013	003	019	006	010	014	005	021	012	002	018	017	026	005
WON'T VOTE	010	004	000	004	002	001	004	004	003	005	000	005	005	008	001
UNDECIDED	009	000	001	005	002	000	004	004	002	006	000	004	005	004	001
TOTAL	800	192	289	233	178	181	243	188	249	367	139	415	369		
COMPOSITION OF ADULTS	100%	24%	36%	29%	22%	23%	30%	23%	31%	46%	17%	52%	46%		
COMP. OF REGISTERED	100%	26%	40%	32%	22%	24%	31%	23%	30%	47%	17%	53%	45%		
COMP OF LIKELY VOTERS	100%	27%	40%	32%	21%	25%	31%	22%	30%	48%	17%	54%	45%		

800 ILLINOIS ADULTS INTERVIEWED BY TELEPHONE 10/27 - 10/29.
OF THEM, 728 WERE REGISTERED TO VOTE.
OF THEM, 665 WERE JUDGED TO BE 'LIKELY' VOTERS.
GRAPHS REFLECT 'LIKELY' VOTERS.

RAW COUNTS FOR ALL RESPONSE CHOICES

THE RESPONSES OF A SUBPOPULATION OF 100 WOULD TYPICALLY BE CONSIDERED ACCURATE ± 10%. PLEASE EXERCISE EXTREME CAUTION IN DRAWING CONCLUSIONS FROM SUBPOPULATIONS SMALLER THAN 100

	OVERALL	NO RELIGIOUS SERVICES	OCCASIONAL RELIGIOUS SERVICES	REGULAR RELIGIOUS SERVICES	PRO-LIFE	PRO-CHOICE	UNION	NON-UNION	CHICAGO CITY	SUBURBAN COOK	COLLAR COUNTIES	DOWNSTATE	URBAN	SUBURBAN	RURAL
REGISTERED	728	159	240	314	284	389	183	504	167	151	133	277	246	376	107
CERTAIN	623	130	199	282	239	341	158	432	141	127	112	243	210	325	089
PROBABLE	042	010	020	010	017	020	009	031	008	011	008	014	011	026	004
LIKELY	665	140	219	293	257	361	167	463	149	139	120	258	221	351	093
BUSH (R)	278	052	086	136	160	101	069	198	027	053	072	125	060	171	047
KERRY (D)	358	080	125	144	084	245	082	252	114	077	043	123	153	164	041
OTHER	019	006	005	008	007	012	012	007	006	005	003	006	006	009	004
UNDECIDED	011	003	003	004	005	003	004	006	002	003	001	004	003	006	002
KEYES (R)	178	038	049	090	111	060	049	125	026	029	041	082	043	103	032
OBAMA (D)	432	088	153	180	117	281	100	304	116	099	066	151	165	214	053
OTHER	035	008	012	015	018	015	015	019	003	009	011	013	006	025	005
WON'T VOTE	010	005	003	003	005	003	001	009	001	002	002	006	002	007	001
UNDECIDED	009	002	003	004	005	001	002	007	004	000	000	005	004	002	003
TOTAL	800	184	262	333	308	427	193	557	181	167	147	306	270	415	115
COMPOSITION OF ADULTS	100%	23%	33%	42%	38%	53%	24%	70%	23%	21%	18%	38%	34%	52%	14%
COMP. OF REGISTERED	100%	22%	33%	43%	39%	53%	25%	69%	23%	21%	18%	38%	34%	52%	15%
COMP OF LIKELY VOTERS	100%	21%	33%	44%	39%	54%	25%	70%	22%	21%	18%	39%	33%	53%	14%

800 ILLINOIS ADULTS INTERVIEWED BY TELEPHONE 10/27 - 10/29. OF THEM, 728 WERE REGISTERED TO VOTE. OF THEM, 665 WERE JUDGED TO BE ' LIKELY' VOTERS. GRAPHS REFLECT ' LIKELY' VOTERS.

The following is a material part of this report and should be included when data is referenced:

How this poll was conducted: This SurveyUSA poll was conducted by telephone in the voice of a professional announcer. All respondents heard the questions asked identically. Page 1 of this report contains: the geography that was surveyed; the dates interviews were conducted; the news organization that paid for the research; and the name of the random sample provider. The universe of respondents and the margin of error are stated on Page 2 of this report, and if restated on one or more subsequent pages, it is because the universe and margin of error changed for those subsequent questions. Where necessary, responses were weighted according to age, gender, ethnic origin, geographical area and number of adults and number of voice telephone lines in the household, so that the sample would reflect the actual demographic proportions in the population, using most recent U.S. Census estimates. In theory, with the stated sample size, one can say with 95% certainty that the results would not vary by more than the stated margin of error, in one direction or the other, had the entire universe of respondents been interviewed with complete accuracy. There are other possible sources of error in all surveys that may be more serious than theoretical calculations of sampling error. These include refusals to be interviewed, question wording and question order, weighting by demographic control data and the manner in which respondents are filtered (such as, determining who is a likely voter). It is difficult to quantify the errors that may result from these factors. Fieldwork for this survey was done by SurveyUSA of Verona, NJ. These statements conform to the principles of disclosure of the National Council on Public Polls.